

TECHNICAL MANUAL

**ORGANIZATIONAL AND DIRECT SUPPORT
MAINTENANCE REPAIR PARTS AND
SPECIAL TOOLS LIST**

**HAMMER, PILE DRIVER, SELF POWERED, DIESEL
(KOEHRING MODEL DA35)
FSN 3895-443-4695**

**HEADQUARTERS, DEPARTMENT OF THE ARMY
24 NOVEMBER 1970**

**ORGANIZATIONAL AND DIRECT SUPPORT
 MAINTENANCE REPAIR PARTS AND SPECIAL TOOLS LIST**

**HAMMER, PILE DRIVER, SELF POWERED, DIESEL
 (KOEHRING MODEL DA 35)
 FSN 3895-443-4696**

Current as of 30 October 1970

	Listing Page	Illustration Figure
Section I.	Introduction iii	
II.	Prescribed load allowance 1	
III.	Repair parts for organizational maintenance 3	
Group 01.	Engine covers and access plates 3	
	Covers, access plates and related parts 1	1
02.	Cylinder and Components 4	
	Cylinder and components 2	2
03.	Engine Lubrication System 4	
	Oil filter 3	3
	Oil pump 4	4
04.	Diesel starting controls 4	
	Fuel filter 5	5
	Fuel pump 6	6
	Trip mechanism 7	7
	Trip safety mechanism 8	8
	Transmitter assembly 9	9
05.	Pile driving attachments 8	
	Air gage 10	10
	Drive caps 11	11
Section IV.	Special tools, test and support equipment for organizational maintenance (Not Applicable)	
V.	Repair parts for DS maintenance 10	
Group 01.	Engine covers and access plates 10	
	Covers, access plates and related parts 1	1
02.	Cylinder and components 11	
	Cylinder and components 2	2
03.	Engine lubrication system 11	
	Oil filter 3	3
	Oil pump 4	4
04.	Diesel starting controls 12	
	Fuel filter 5	5
	Fuel pump 6	6

	Listing Page	Illustration Figure
Trip mechanism		7
Trip safety mechanism		8
Transmitter assembly		9
05. Pile driving attachments	18	
Air gage		10
Drive caps.....		11
Section VI. Special Tools, Test and Support Equipment for DS Maintenance (Not Applicable)		
VII. Federal Stock Number and Reference Number Index.....	30	

**SECTION I.
INTRODUCTION**

1. Scope

This manual lists repair parts, special tools, test and support equipment required for the performance of organizational and direct support maintenance of the hammer, pile driver.

2. General

This Repair Parts and Special Tools List is divided into the following sections:

a. Prescribed Load Allowance (PLA) Section II. A composite listing of repair parts, special tools, test and support equipment having quantitative allowances for initial stockage at the organizational level.

b. Repair Parts Section III. A list of repair parts authorized for the performance of maintenance at the organizational level in figure and item number sequence.

c. Special Tools, Test and Support Equipment Section IV. (Not Applicable).

d. Repair Parts Section V. A list of repair parts authorized for the performance of maintenance at the direct support level in figure and item number sequence.

e. Special Tools, Test and Support Equipment Section VI. (Not Applicable).

f. Federal Stock Number and Reference Number Index Section VII. A list of Federal stock numbers in ascending numerical sequence, followed by a list of reference numbers appearing in all of the listings, in alpha-numeric sequence, cross-referenced to the illustration figure number and item number.

NOTE

Items not illustrated are cross-referenced to assembly group number.

3. Explanation of Columns

The following provides an explanation of columns in the tabular lists in sections II through VI.

a. Source, Maintenance, and Recoverability Codes (SMR).

(1) Source code indicates the selection status and source for the listed item. Source codes used are:

Code	Explanation
P	Repair parts, special tools and test equipment supplied from the GSA/DSA, or Army supply system, and authorized for use at indicated maintenance categories.
P2	Repair parts, special tools and test equipment which are procured and stocked for insurance purposes because the combat or military essentiality of the end item dictated that a minimum quantity be available in the supply system.
M	Repair parts, special tools and test equipment which are not procured or stocked, as such, in the supply system but are to be manufactured at indicated maintenance levels.

Code

Explanation

A	Assemblies which are not procured or stocked as such, but are made up of two or more units. Such component units carry individual stock numbers and descriptions, are procured and stocked separately and can be assembled to form the required assembly at indicated maintenance categories.
X	Parts and assemblies that are not procured or stocked because the failure rate is normally below that of the applicable end item or component. The failure of such part or assembly should result in retirement of the end item from the supply system.
X1	Repair parts which are not procured or stocked. The requirement for such items will be filled by the next higher assembly or component.
X2	Repair parts, special tools and test equipment which are not stocked and have no foreseen mortality. The indicated maintenance category requiring such repair parts will attempt to obtain the parts through cannibalization or salvage, the item may be requisitioned with exception data, from the end item manager, for immediate use.
G	Major assemblies that are procured with PEMA funds for initial issue only as exchange assemblies at DSU and GSU level. These assemblies will not be stocked above the DS and GS level or returned to depot supply level.

(2) Maintenance code indicates the lowest level of maintenance authorized to install the listed item. The maintenance codes are:

Code	Explanation
O	Organizational maintenance
F	Direct support maintenance
	(3) Recoverability code indicates whether unserviceable items should be returned for recovery or salvage. Items not coded are expendable. Recoverability codes are:

Code	Explanation
R	Applied to repair parts, (assemblies and components) special tools and test equipment which are considered economically repairable at direct and general support maintenance levels. When the item is no longer economically repairable, it is normally disposed of at the GS level. When supply considerations dictate, some of these repair parts may be listed for automatic return to supply for depot level repair as set forth in AR 710-50. When so listed, they will be replaced by supply on an exchange basis.

S	Repair parts, special tools, test equipment and assemblies which are economically repairable
---	--

Code**Explanation**

at DSU and GSU activities and which normally are furnished by supply on an exchange basis. When items are determined by a GSU to be uneconomically repairable, they will be evacuated to a depot for evaluation and analysis before final disposition.

T High dollar value recoverable repair parts, special tools and test equipment which are subject to special handling and are issued on an exchange basis. Such items will be repaired or overhauled at depot maintenance activities only. No repair may be accomplished at lower levels.

U Repair parts, special tools and test equipment specifically selected for salvage by reclamation units because of precious metal content, critical materials, high dollar value or reusable casings or castings.

b. *Federal Stock Number.* Indicates the Federal stock number assigned to the item and will be used for requisitioning purposes.

c. *Description.* Indicates the Federal item name and any additional description of the item required. Assembly components and subassemblies are indented under major assemblies. The abbreviation "w/e" when used as a part of the nomenclature, indicates the Federal stock number includes all armament, equipment, accessories, and repair parts issued with the item. A part number or other reference number is preceded by the applicable 5digit Federal supply code for manufacturers in parenthesis. Repair parts quantities included in kits and sets are shown in front of the repair part name. Material required for manufacture or fabrication is identified.

d. *Unit of Measure (U/M).* A two-character alphabetic abbreviation indicating the amount or quantity of the item upon which the allowances are based, e.g., ft, ea, pr, etc.

e. *Quantity incorporated in Unit.* Indicates the quantity of the item used in the assembly group. A "V" appearing in this column in lieu of a quantity indicates that a definite quantity cannot be indicated (e.g., shims, spacers, etc.).

f. *Fifteen-Day Organizational Maintenance Allowance.*

(1) The allowance columns are divided into four subcolumns. Indicated in each subcolumn opposite the first appearance of each item is the total quantity of the items authorized for the number of equipments supported. Subsequent appearances of the same item will have the letters "REF" in the allowance column. To locate the referenced item, locate the FSN or reference number in the index. The earliest figure and item number is the referenced item. Items authorized for use

as required but not for initial stockage are identified with an asterisk in the allowance column.

(2) The quantitative allowance for organizational iv level of maintenance represents one initial prescribed load for a 15-day period for the number of equipments supported. Units authorized additional prescribed loads, multiply the number of prescribed loads by the quantity in the appropriate density column to determine the number of repair parts authorized.

(3) To determine allowances when supporting more than 100 of these equipments: first divide the number of equipments supported by 100 by moving the decimal two spaces left; second, multiply the result by the quantity in the 51-100 density column. Example, authorized allowance for 51-100 equipments is 12; for 140 equipments, multiply 12 by 1.40 or 16.80 rounded off to 17 parts required.

(4) Subsequent changes to allowances will be limited as follows: No change in the range of items is authorized. If additional items are considered necessary, recommendation should be forwarded to the U.S. Army Mobility Equipment Command for exception or revision to the allowance list. Revisions to the range of items authorized will be made by the U.S. Army Mobility Equipment Command based upon engineering experience, demand data, or TAERS information.

g. *Thirty-Day DS/Maintenance Allowances.*

(1) The allowance columns are divided into three subcolumns. Indicated in each subcolumn, opposite the first appearance of each item, is the total quantity of items authorized for the number of equipments supported. Subsequent appearances of the same item will have the letters "REF" in the applicable allowance column. To locate the referenced item locate the FSN or reference number in the index. The earliest figure and item number is the referenced item. Items authorized for use as required but not for initial stockage are identified with an asterisk in the allowance column.

(2) The quantitative allowance for DS level of maintenance will represent initial stockage for a 30-day period for the number of equipments supported.

(3) To determine allowances when supporting more than 100 of these equipments: First divide the number of equipments supported by 100 by moving the decimal two places left; second, multiply the result by the quantity in the 51-100 density column. Example, authorized allowance for 51-100 equipments is 40; for 150 equipments multiply 40 by 1.50 or 60 parts required.

h. *One-Year Allowance Per 100 Equipments/Contingency Planning Purposes.* Indicates opposite the first appearance of each item the total quantity required for distribution and contingency planning purposes. The range of items indicates total quantities of all authorized items required to provide for adequate support of 100 equipments for one year.

Subsequent appearances of the same item will have the letters "REF" in the allowance column.

i. *Illustration.* This column is divided as follows:

(1) *Figure number.* Indicates the figure number of the illustration in which the item is shown.

(2) *Item number.* Indicates the callout number used to reference the item in the illustration.

4. Special Information

a. Repair parts mortality has been based on 1000 hours operation per year.

b. Parts which required manufacture or assembly at a category higher than that authorized for installation will indicate in the source column the higher category.

c. The following publications pertain to the hammer pile and its components:

TM 5-3895-332-12	Operator and Organizational Maintenance Manual
TM 5-3895-332-34	Direct Support and General Support Maintenance Manual

d. The same illustrations are used to illustrate the repair parts and special tools listed in both organizational maintenance section and direct support maintenance section.

5. How to Locate Repair Parts

a. When Federal Stock Number or Reference Number is Unknown:

(1) *First.* Using the table of contents, determine the assembly group within which the repair part belongs. This is necessary since illustrations are prepared for assembly groups and listings are divided into the same groups.

(2) *Second.* Find the illustration covering the assembly group to which the repair part belongs.

(3) *Third.* Identify the repair part on the illustration and note the illustration figure and item number of the repair part.

(4) *Fourth.* Using the Repair Part Listing, find this assembly to which the repair part belongs and locate the illustration figure and item number noted on the illustration.

b. When the Federal Stock Number or Reference Number is Known:

(1) *First.* Using the Index of Federal Stock Numbers and Reference Numbers find the pertinent Federal stock number or reference number. This index is in ascending FSN sequence, cross referenced to the illustration figure number and item number.

(2) *Second.* Using the Repair Part Listing, find the assembly group of the repair part and the illustration figure number and item number referenced in the Index of Federal Stock Numbers and Reference Numbers.

c. When the Federal Stock Number or Reference Number is known and the Repair Part is not Illustrated.

(1) *First.* Using the Index of Federal Stock Numbers and Reference Numbers find the pertinent Federal stock number or reference number in the section titled "Items Not Illustrated" and note the page number. This section of the index is in ascending FSN sequence followed by a list of reference numbers in alpha-numeric sequence, cross-referenced to page number.

(2) *Second.* Using the Table of Contents, locate the assembly group number and page number.

(3) *Third.* Using the applicable group number and page number locate the pertinent stock number or reference number in the Repair Parts Listing. Items which are not illustrated are listed at the end of the assembly group to which they belong.

6. Abbreviations

dia	diameter(s)
ft	feet (foot)
id	inside diameter(s)
in	inch(es)
lg	long (length)
nc	national course thread
nf	national fine thread
NPT	National Pipe Thread
od	outside diameter (s)
UNC	Unified course thread
UNF	Unified fine thread
W	wide (width)

7. Federal Supply Code for Manufacturers

Code	Manufacturer
20263	MKT Div of Koehring Co.
30084	Pilley Mfg. Co.
45681	Parker-Hammifim Corp.
53477	Scovill Mfg. Co. Fluid Power Div. 72962 Elastic Stop Nut Div of Amerace Esna Corp.
73992	Hansen Mfg. Co.
75535	Kingsport Press Inc.
76689	National Screw and Mfg. Co.
79136	Waldes Kohinoor Inc.
79470	The Weatherhead Co.
79976	The Perry-Fay Co.
81348	Federal Specifications
81349	Military Specifications
83259	Parker Seal Co. Div. of Parker-Hammifim Corp.
83584	Drive & Lok
83616	The Polymer Corp.
88044	Aeronautical Standards
92555	The Lee Co.
96906	Military Standards
99879	Aeroquip Corp.

8. Recommendations For Maintenance Publication Improvements

Report of errors, omissions, and recommendations for improving this publication by the individual user is encouraged. Reports should be submitted on DA Form

2028 (Recommended Changes to Publications) and forwarded direct to Commanding General, U. S. Army Mobility Equipment Command, ATTN: 'AMSME-MPP, 4300 Goodfellow Boulevard, St. Louis, Mo. 63120.

(1) FEDERAL STOCK NUMBER	(2) DESCRIPTION USABLE ON CODE	(3) 15-DAY ORG MAINT. ALW			
		(a) 1-5	(b) 6-20	(c) 21-50	(d) 51-100
	SECTION II - PRESCRIBED LOAD ALLOWANCE				
	GROUP 01 - ENGINE COVERS AND ACCESS PLATES				
3895-871-8384	VALVE CHECK ASSEMBLY				1
3895-900-8603	SPRING, HELICAL, COMPRESSION				1
3895-936-7143	PLUNGER, DETENT				1
5330-439-2530	GASKET, ACCESS PLATES				1
	GROUP 03 - ENGINE LUBRICATION SYSTEM				
3895-071-8052	STRAINER, ELEMENT, FUEL: 7/8 IN. ID, 3 7/16 IN. LG				1
3895-247-3179	PUMP OIL ASSEMBLY				1
3895-871-8383	VALVE, CHECK, FUEL SYSTEM			1	2
3895-871-8385	FILTER VALVE ASSEMBLY : OIL			1	2
3895-900-2353	SPRING, HELICAL, COMPRESSION			1	1
4720-857-1736	TUBING, PLASTIC, OIL LINE: 27 FT LG				1
4730-871-8376	INSERT, TUBE, COUPLING: 1 1/4 IN. DIA X 1 3/16 IN. LG		1	2	4
	FERRULE, COUPLING D181 (20263)		1	2	4
	GROUP 04 - DIESEL STARTING CONTROLS				
3895-247-3152	TRANSMITTER ASSEMBLY				
3895-247-3177	PUMP, FUEL, REMOTE CONTROL				
3895-248-4343	HOOK, TRIP MECHANISM				1
3895-401-4143	FILTER, BREATHER				6
3895-401-4144	TRIP, STOP, SAFETY MECHANISM				1
3895-401-4145	PIN TRIP, SAFETY MECHANISM 1 IN. DIA, 7 IN. LG				1
3895-401-4146	GAGE ASSEMBLY, AIR				
3895-868-7931	CAM, CONTROL				1
3895-900-8602	SPRING, HELICAL, COMPRESSION: 1 7/8 IN. LG				
3895-989-3410	SPRING, HELICAL, COMPRESSION: 3 5/8 IN. FREE LG			1	1
3895-989-3411	LINK, TRIP MECHANISM	1	2	4	8
3895-989-3418	DISK, CUSHION BLOCK, PLASTIC: 2 IN. THK, 18 1/2 IN. DIA			1	1
4710-901-9645	TUBING, PLASTIC: 7/32 IN. ID X 3/8 IN. OD, 8 FT. LG				1
4720-236-2655	HOSE ASSEMBLY: 7 7/8 IN. LG				1
4720-236-2656	HOSE, REMOTE CONTROL 25 FT, 1 3/4 IN. LG			1	1

(1) FEDERAL STOCK NUMBER	(2) DESCRIPTION	(3) 15-DAY ORG MAINT. ALW			
		(a) 1-5	(b) 6-20	(c) 21-50	(d) 51-100
4820-248-3700	VALVE, CHECK RELIEF: 2 IN. W, 3 IN. LG				1
4730-244-4262	COUPLING, SELF-SEALING: 1/8 IN. NPT, BOTH ENDS 3 3/8 IN. LG			1	2
4730-244-4262	COUPLING, SELF-SEALING: 1/8 IN. PS, BOTH ENDS 3 3/8 IN. LG			1	2
5330-187-3638	PACKING, PREFORMED		1	2	3
5330-498-4542	GASKET			1	2
5330-601-4932	SEAL, AIR GAGE				
5340-498-4594	CAP, DUST: HOSE ASSEMBLY, 7/8 IN. DIA. X 5/8 IN. LG			1	2
5340-498-4605	BUMPER, RUBBER				1
5340-618-0245	PLUG, DUST: HOSE COUPLING, 7/8 IN. DIA. X 1 1/4 IN. LG			1	2
6685-075-4694	GAGE, PRESSURE: 200 PSI, 1/8 IN. NPT				
	WIRE ROPE, STEEL: 1/2 IN. DIA, 6 FT. LG				
	TRIP, SAFETY MECHANISM D3573 (20263)				

(1) SMR CODE	(2) FEDERAL STOCK NUMBER	(3) DESCRIPTION USABLE ON CODE	(4) UNIT OF MEAS	(5) QTY INC IN UNIT	(6) 15-DAY ORGANIZATIONAL MAINTENANCE ALW				(7) ILLUS- TRATION	
					(a)	(b)	(c)	(d)	(a) FIG NO	(b) ITEM NO
		SECTION III -REPAIR PARTS FOR ORGANIZATIONAL MAINTENANCE								
		GROUP 01 - ENGINE COVERS AND ACCESS PLATES								
X20		PLUG, PIPE: 1/8 IN. THD SIZE D3538-11 (20263)	EA	1					1	1
X20		SCREW, CAP, HEXAGON HEAD: 7/8-9 NC x 2 1/2 IN. LG D3568 (76689)	EA	12					1	2
X20		WASHER, LOCK: 7/8 IN. D3569 (76689)	EA	12					1	3
X20		COVER, PLATE, ACCESS D3543 (20263)	EA	1					1	4
P O	5330-439-2530	GASKET, ACCESS PLATE D3544 (20263)	EA	1	*	*	*	1	1	5
X20		PLUG, PIPE: 1 1/2 IN. FUEL TANK D3561 (2263)	EA	1					1	6
X20		CONNECTOR, BALL CHECK 1 1/8 IN. NPT X 1 3/16 IN. LG, FUEL AND OIL TANKS D3559 (20263)	EA	2					1	7
X20		PLUG, PIPE: 1 1/4 IN. OIL TANK D3560 (202 63)	EA	1					1	8
X20		CLAMP, WIRE ROPE THREADED: 3/4 IN. S5-58 (75535)	EA	3					1	9
X20		PENDANT, STEEL, WIRE ROPE: TRIP MECHANISM D220 (20263)	EA	1					1	10
X20		BOLT, SPUD, BRACKET: 1-14 X 3 IN. LG D250 (20263)	EA	24					1	12
X20		BRACKET SPUD, GUIDE D3547 (20263)	EA	6					1	13
X20		BOLT, SELF-LOCKING D262 (20263)	EA	2					1	14
X20		COVER, PLATE, ACCESS: TRIP HOUSING D355 (20263)	EA	1					1	15
X20		COVER, PLATE, ACCESS: FUEL PUMP D353A (20263)	EA	1					1	16
X20		BOLT, EXTERNAL RELIEVED BODY: 1 1/2-12 NF X 3 IN. LG D142A (20263)	EA	1					1	17
X20		LEGEND, PLATE D296 (20263)	EA	1					1	18
X20		OPERATING, INSTRUCTION PLATE 32-620 (20263)	EA	1					1	19
P O	3895-871-8384	VALVE CHECK ASSEMBLY BP1700 (20263)	EA	2	*	*	*	1	1	20
X20		PIN, STRAIGHT, HEADLESS 3/32 IN. DIA X 27/64 IN. LG D171-4A (20263)	EA	1					1	21
P O	3895-936-7143	PLUNGER, DETENT D171-3A (20263)	EA	1	*	*	*	1	1	22
X20		INSERT, SCREW, THREADED 0171-5A (20263)	EA	1					1	23
X20		WASHER, KEYWAY D171-2A (20263)	EA	1					1	24

(1) SMR CODE	(2) FEDERAL STOCK NUMBER	(3) DESCRIPTION REF NUMBER & MFR CODE	(4) UNIT OF MEAS USABLE ON CODE	(5) QTY INC IN UNIT	(6) 15-DAY ORGANIZATIONAL MAINTENANCE ALW				(7) ILLUS- TRATION	
					(a)	(b)	(c)	(d)	(a)	(b)
					1-5	6-20	21-50	51-100	FIG NO	ITEM NO
P O	3895-900-8603	SPRING, HELICAL COMPRESSION BP2015 (20263)	EA	1	*	*	*	1	1	25
X1		HOUSING, VALVE D171-1A (20263)	EA	1					1	26
		GROUP 02 - CYLINDER AND COMPONENTS								
X		CYLINDER D3504 (20263)	EA	1					2	15
		GROUP 03 - ENGINE LUBRICATION SYSTEM								
P O	3895-871-8385	FILTER VALVE ASSEMBLY: OIL D234B (20263)	EA	1	*	*	1	2	3	1
X20		CLAMP, LOOP D125 (20263)	EA	1					3	2
P O	3895-071-8052	STRAINER, ELEMENT, FUEL: 7/8 IN. ID, 3 7/16 IN. LG d132 (20263)	EA	1	*	*	*	1	3	3
X20		RING, RETAINING 5000-56 (79136)	EA	1					3	4
P O	3895-900-2353	SPRING HELICAL, COMPRESSION AP208 (20263)	EA	1	*	*	*	1	3	5
P O	3895-871-8383	VALVE, CHECK. FUEL SYSTEM AP207 (20263)	EA	1	*	*	1	2	3	6
X1		HOUSING, VALVE D234-1A (20263)	EA	1					3	7
P O	4720-857-1736	TUBING, PLASTIC, OIL LINE: 27 FT LG MILH27267 (81349)	FT	V	*	*	*	1	4	1
X20		INVERTER NUT, COUPLING: 3/16 IN. DIA X 3/32 IN. LG D180 (20263)	EA	10					4	2
P O		FERRULE, COUPLING D181 (20263)	EA	10	*	1	2	4	4	3
P O	4730-871-8376	INSERT, TUBE COUPLING: 1 1/4 IN. DIA X 1 3/16 IN. LG D182 (20263)	EA	10	*	1	2	4	4	4
X20		NUT SELF-LOCKING HEXAGON: 38-24 UNF 52NE064 (72962)	EA	4					4	5
X20		STUD, MOUNTING: 3/8-21 UNF X 1/2-20 NF 5 ROLLED THD, FOR STUD FIT, 2 3/8 IN. LG D3535 (20263)	EA	4					4	6
P O R	3895-247-3179	PUMP OIL ASSEMBLY D3538 (20263)	EA	1	*	*	*	1	4	7
X20		PLUG, PIN, SERRATED 1S (92555)	EA	5					1	17
X20		PLUG, PIPE: 1/8 IN. D140 (2063)	EA	4					4	18
		GROUP 04 - DIESEL STARTING CONTROLS								
P O	3895-871-8385	FILTER VALVE ASSEMBLY FUEL D234B (20263)	EA	1	REF	REF	REF	REF	5	1
X20		CLAMP, LOOP D125 (20263)	EA	1					5	2

(1) SMR CODE	(2) FEDERAL STOCK NUMBER	(3) DESCRIPTION USABLE ON CODE	(4) UNIT OF MEAS	(5) QTY INC IN UNIT	(6) 15-DAY ORGANIZATIONAL MAINTENANCE ALW				(7) ILLUS- TRATION	
					(a)	(b)	(c)	(d)	(a)	(b)
					1-5	6-20	21-50	51-100	FIG NO	ITEM NO
P O	3895-071-8052	STRAINER, ELEMENT FUEL 7/8 IN. ID 3 7/16 IN. LG D132 (20263)	EA	1	REF	REF	REF	REF	5	3
X2C		RING, RETAINING 5000-56 (79136)	EA	1					5	4
P O	3895-900-2353	SPRING, HELICAL, COMPRESSION AP08 (20263)	EA	1	REF	REF	REF	REF	5	5
P O	3895-871-8383	VALVE CHECK, FUEL SYSTEM AP207 (20263)	EA	1	REF	REF	REF	REF	5	6
X1		HOUSING, VALVE D234-1A (20263)	EA	1					5	7
P O R	3895-247-3177	PUMP, FUEL REMOTE CONTROL D323R (20263)	EA	1	*	*	*	*	6	1
X20		PIN, STRAIGHT, HEADLESS: 19/32 IN. DIA X 3 1/16 IN. LG D123-3 (20263)	EA	1					6	2
P O	3895-568-7931	CAM, CONTROL CP504 (20263)	EA	1	*	*	*	1	6	3
X20		CABLE CONTROL ASSEMBLY, FUEL PUMP: 1/4 IN. DIA, 4 FT LG D123-36 (20263)	EA	1					6	4
X20		STOP, CAM WEAR CAP, FUEL PUMP D123-4 (20263)	EA	1					6	7
X20		NUT, SELF-LOCKING, HEXAGON: 5/16-18 UNC 42NEO58 (72962)	EA	4					6	23
X20		BOLT PLAIN, HEXAGON: 5/16-18 NC X 1 1/2 IN. LG D223-61 (76689)	EA	2					6	24
X20		BOLT, PLAIN HEXAGON: 5/16-18 NC X 1 IN. LG D223-60 (76689)	EA	2					6	25
X20		CLAMP, HOSE, REMOTE CONTROL D223-58 (20263)	EA	1					6	26
X20		WIRE ROPE ASSEMBLY, REMOTE CONTROL D223-57 (20263)	EA	2					6	27
X20		NUT, SELF-LOCKING: 1/4-20 UNC 21NTEO40 (72962)	EA	1					6	28
X20		VALVE, BLEED, REMOTE CONTROL D223-54 (20263)	EA	1					6	29
X20		SEAT, DRAIN VALVE D223-62 (20263)	EA	1					6	30
X20		NUT SELF-LOCKING, HEXAGON: 3/8-24 UNF 52NEO64 (72962)	EA	6					6	42
X20		STUD, MOUNTING: 1/2 IN. DIA X 3 1/2 IN. LG, 3/8-24 F, ONE END D3527 (20263)	EA	6					6	44
P O	4720-857-1736	TUBING, PLASTIC, OIL LINE: 8 FT LG MILH27267 (813499)	FT	8	REF	REF	REF	REF	6	45
X20		NUT, TUBE, 3/16 IN. DIA X 3/32 IN. LG D180 (20263)	EA	4					6	46
P O		FERRULE, COUPLING D181 (20263)	EA	4	REF	REF	REF	REF	6	47

(1) SMR CODE	(2) FEDERAL STOCK NUMBER	(3) DESCRIPTION REF NUMBER & MFR CODE	(4) USABLE ON CODE	(5) UNIT OF MEAS	(6) 15-DAY ORGANIZATIONAL MAINTENANCE ALW				(7) ILLUS- TRATION		
					(a)	(b)	(c)	(d)	(a) FIG NO	(b) ITEM NO	
					1-5	6-20	21-50	51-100			
P O	4730-871-8376	INSERT, TUBE, COUPLING: 1/4 IN. DIA, 1 3/16 IN. LG D182 (20263)		EA	4	REF	REF	REF	REF	6	48
X20		VENT LINE, PUMP: 1/4 IN. ID X 3/8 IN. OD, 8 FT LG 22-249 (20263)		EA	1					6	49
X20		ADAPTER, PIPE TUBE D215 (2263)		EA	1					6	50
X20		INSERT, TUBE, COUPLING: 3/8 IN. DIA X 9/16 IN. LG 5605-4 (02570)		EA	1					6	51
X20		FERRULE, COUPLING: 1/2 IN. DIA X 3/8 IN. LG 6TVS (45681)		EA	1					6	52
X20		INVERTED NUT, TUBE: 3/16 IN. X 3/32 IN. LG D287 (20263)		EA	1					6	53
P O	4710-901-9645	TUBING, PLASTIC: 7/32 IN. ID X 3/8 IN. OD, 8 FT LG NS12H (83616)		FT	8	*	*	*	1	6	54
P O	3895-401-4143	FILTER, BREATHER D286 (20263)		EA	1	*	*	*	*	6	55
X20		TRIP MECHANISM ASSEMBLY 42-462 (20263)		EA	1					7	1
P O	5330-187-3638	PACKING, PREFORMED AN6227B5 (88044)		EA	4	*	1	2	3	7	2
X20		PIN, GROOVED, HEADLESS: 1 IN. DIA, 6 3/8 IN. LG D216-12 (20263)		EA	1					7	3
P O	3595-900-8602	SPRING HELICAL, COMPRESSION: 1 7/8 IN. LG A9595 (20263)		EA	1	*	*	*	*	7	4
X20		PIN, GROOVED, HEADLESS: 1 IN. DIA, 6 3/8 IN. LG D216-11 (20263)		EA	1					7	5
X20		PIN, STRAIGHT, HEADLESS: 1 IN. DIA X 3 1/2 IN. LG D216-9 (20263)		EA	1					7	6
X20		CAM, CONTROL D216-8 (20263)		EA	1					7	7
X20		PIN, STRAIGHT, HEADLESS: 1 IN. DIA X 1 3/4 IN. LG D216-10 (20263)		EA	1					7	8
P O	3895-989-3411	LINK, TRIP MECHANISM D216-6 (20263)		EA	1	1	2	4	8	7	9
P O	3895-248-4343	HOOK, TRIP MECHANISM D216-7A (20263)		EA	1	*	*	*	1	7	10
X20		PLUG TRIP MECHANISM: 5/8 IN. DIA, 1 1/4 IN. LG D3516-5 (20263)		EA	1					7	11
X20		PIN, STRAIGHT, HEADLESS: 1 1/8 IN. DIA X 5 7/16 IN. LG D3516-18 (20263)		EA	1					7	12
P O	3895-989-3410	SPRING, HELICAL, COMPRESSION 3 5/8 IN., FREE LG D216-2 (20263)		EA	1	*	*	1	1	7	13
X20		PLUNGER, DETENT CAP, TRIP MECHANISM D216-4 (20263)		EA	1					7	14

(1) SMR CODE	(2) FEDERAL STOCK NUMBER	(3) DESCRIPTION USABLE ON CODE	(4) UNIT OF MEAS	(5) QTY INC IN UNIT	(6) 15-DAY ORGANIZATIONAL MAINTENANCE ALW				(7) ILLUS- TRATION	
					(a)	(b)	(c)	(d)	(a) FIG NO	(b) ITEM NO
					1-5	6-20	21-50	51-100		
X1		HOUSING, TRIP MECHANISM D3516-1 (20263)	EA	1					7	15
P O	5340-498-4605	BUMPER, RUBBER D217A (20263)	EA	1	*	*	*	1	7	16
P O		TRIP, SAFETY MECHANISM D3573 (20263)	EA	1	*	*	*	*	8	1
M O		ROPE, MANILA: 3/8 IN. DIA X 70 FT LG, TR605 (81349) MANUFACTURE FROM ROPE, MANILA, AS REQUIRED, FSN 4020-689-5688	EA	1					8	2
X20		CABLE CONTROL ASSEMBLY: 1/4 IN. DIA, 4 FT LG D123-36 (20263)	EA	1					8	3
X20		SETSCREW .SOCKET HEAD: 5/8-18 THD SIZE D273-3 (20263)	EA	1					8	4
P O	3895-401-4145	PIN TRIP, SAFETY MECHANISM: 1 IN. DIA, 7 IN. LG D273-2 (20263)	EA	1	*	*	*	1	8	5
P O	3895-401-4144	TRIP, STOP SAFETY MECHANISM D3573-1 (20263)	EA	1	*	*	*	1	8	6
X20		PLUNGER DETENT D216-4 (20263)	EA	1					8	7
P O	3895-989-3410	SPRING, HELICAL COMPRESSION D216-2 (20263)	EA	1	REF	REF	REF	REF	8	8
X20		SETSCREW, SOCKET HEAD: 5/8-18 X 2 1/2 IN. LG W/NYLON INSERT D273-4 (20263)	EA	1					8	9
P O R	3895-247-3152	TRANSMITTER ASSEMBLY D224 (20263)	EA	1	*	*	*	*	9	1
P O	4720-236-2655	HOSE ASSEMBLY: 7 7/8 IN. LG D229 (20263)	EA	1	*	*	*	1	9	2
P O	4730-244-4262	COUPLING, SELF-SEALING: 1/8 IN. NPT, BOTH ENDS, 3 3/8 IN. LG 5100-4 (99879)	EA	5	*	*	1	2	9	3
P O	4720-236-2656	HOSE, REMOTE CONTROL: 25 FT, 1 3/4 IN. LG D230 (20263)	EA	4	*	*	1	1	9	4
X20		NUT, HEXAGON: 1/4-20 NC D224-11 (76689)	EA	4					9	5
X20		WASHER, LOCK: 1/4 IN. D224-10 (76689)	EA	4					9	6
X20		SCREW, CAP, HEXAGON HEAD: 1/4-20 NC X 4 IN. LG D224-9 (76689)	EA	4					9	7
X20		NUT, HEXAGON: 1/4-20 NC D224-11 (76689)	EA	4					9	8
X20		WASHER, LOCK: 1/4 IN. D224-10 (76689)	EA	4					9	9
X20		SCREW, CAP, SOCKET HEAD: 1/4-20 NC X 2 1/2 IN. LG D265 (20263)	EA	4					9	10
X20		PLATE, SUPPORT, REMOTE CONTROL D264 (20263)	EA	1					9	11

(1) SMR CODE	(2) FEDERAL STOCK NUMBER	(3) DESCRIPTION REF NUMBER & MFR CODE	(4) UNIT OF MEAS USABLE ON CODE	(5) QTY INC IN UNIT	(6) 15-DAY ORGANIZATIONAL MAINTENANCE ALW				(7) ILLUS- TRATION	
					(a)	(b)	(c)	(d)	(a) FIG NO	(b) ITEM NO
					1-5	6-20	21-50	51-100		
X20		NIPPLE PIPE 1/8 IN. NPT x 3/4 IN. LG 2084-2-3-4 (20263)	EA	2					9	12
X20		VENT, AIR: 1/8 IN. NPT X 3/4 IN LG 705 (20263)	EA	1					9	13
P O	6685-075-4694	GAGE PRESSURE: 200 PSI, 1/8 IN. NPT D257 (20263)	EA	1	*	*	*	*	9	14
X20		CROSS PIPE: 1/8 IN. NPT 2080-2-2 (20263)	EA	1					9	15
X20		BUSHING, PIPE: 1/8 IN. NPT INSIDE X 1/4 IN. NPT OUTSIDE X 3/4 IN. LG 2081-4-2 (20263)	EA	1					9	16
P O	4820-248-3700	VALVE, CHECK RELIEF: 2 IN. W, 3 IN. LG CRS400-2S400S (79976)	EA	1	*	*	*	1	9	17
X20		SPRING, HELICAL, COMPRESSION LC042E13 (20263)	EA	2					9	18
X20		CHECK, BALL: 3/8 IN. DIA D269 (20263)	EA	2					9	19
X20		CONNECTOR, PIPE: 1/4 NPT X 1 3/8 IN. LG 2083-4-4 (20263)	EA	1					9	20
X20		HANDLE, TRANSMITTER 20B026 (20263)	EA	1					9	21
X20		CAP 20A022 (20263)	EA	1					9	22
P O	5330-498-4542	GASKET 20A023 (20263)	EA	1	*	*	1	2	9	23
X20		SCREW, MACHINE, BUTTON HEAD: 8-32 X 1/4 IN. LG D224-17 (20263)	EA	3					9	24
X20		WASHER, LOCK: NO. 8 MS35338-4 (96906)	EA	3					9	25
X20		SEGMENT, LATCH D224-2 (20263)	EA	1					9	26
X1		HOUSING, TRANSMITTER 20D046 (20263)	EA	1					9	38
P O	5340-618-0245	PLUG DUST: HOSE COUPLING, 7/8 IN. DIA X 1/4 IN. LG 5100S9 (20263)	EA	5	*	*	1	2	9	39
P O	5340-498-4594	CAP, DUST: HOSE ASSEMBLY, 7/8 IN. DIA X 5/8 IN. LG 510057 (2026m3)	EA	5	*	*	1	2	9	40
P O	3895-401-4146	GROUP 05 - PILE DRIVING ATTACHMENTS GAGE ASSEMBLY, AIR D3566A (20263)	EA	1	*	*	*	*	10	1
X20		HOUSING, AIR GAGE D3566A2 (20263)	EA	1					10	2
X1		GAGE, AIR 8810(53477)	EA	1					10	3
P O	5330-601-4932	SEAL, AIR GAGE 600-001-1-2 (83259)	EA	1	*	*	*	*	10	4
X20		CAP, AIR GAGE D3566A3 (20263)	EA	1					10	5

(1) SMR CODE	(2) FEDERAL STOCK NUMBER	(3) DESCRIPTION REF NUMBER & MFR CODE	(4) UNIT OF MEAS USABLE ON CODE	(5) QTY INC IN UNIT	(6) 15-DAY ORGANIZATIONAL MAINTENANCE ALW				(7) ILLUS- TRATION	
					(a)	(b)	(c)	(d)	(a)	(b)
					1-5	6-20	21-50	51-100	FIG NO	ITEM NO
X20		COUPLING, REDUCER: 1/4 IN. TO 1/8 IN. PIPE 3300X4X2 (79470)	EA	1					10	6
P O	472-236-2656	HOSE, CONTROL, REMOTE: 25 FT, 1 3/4 IN. LG D230 (20263)	EA	1	REF	REF	REF	REF	10	7
X20		SOCKET, QUICK CONNECTING 2H1G11 (73992)	EA	1					10	8
X20		PLUG, QUICK CONNECTING 2K1G20 (73992)	EA	1					10	9
P O	3895-989-3418	DISK, CUSHION BLOCK, PLASTIC: 2 IN. THK, 18 1/2 IN. DIA D278 (20263)	EA	3	*	*	1	1	11	1
X20		CAP, UNIVERSAL. PILE F9474 (20263)	EA	1					11	2
X20		FILLER PIECE, UNIVERSAL DRIVE CAP C9583 (20263)	EA	1					11	3
X20		CAP, CONCRETE, PILE: 16 IN. DIA 62-095 (20263)	EA	1					11	4
X20		CLAMP, WIRE ROPE: 1/2 IN. D176 (75535)	EA	4					11	5
P O		WIRE ROPE, STEEL: 1/2 IN. DIA, 6 FT LG D175 (20263)	EA	2	*	*	*	*	11	6
X20		CAP, SHEET, PILE DRIVE 32-221 (20263)	EA	1					11	7

(1) SMR CODE	(2) FEDERAL STOCK NUMBER	(3) DESCRIPTION USABLE ON CODE	(4) UNIT OF MEAS	(5) QTY INC IN UNIT	(6) 30-DAY DS MAINT ALLOWANCE			(7) 30 DAY GS MAINT ALLOWANCE			(8) 1-YR ALW PER 100 EQUIP CNTGY	(9) ILLUS- TRATION	
					(a)	(b)	(c)	(a)	(b)	(c)		(a)	(b)
					1-20	21-50	51-100	1-20	21-50	51-100		FIG NO.	ITEM NO.
		SECTION V - REPAIR PARTS FOR CS, GS, MAINTENANCE GROUP 01 - ENGINE COVERS AND ACCESS PLATES											
X20		PLUG, PIPE: 1/8 IN. THD SIZE D3538-11 1(20263)	EA	1								1	1
X20		SCREW, CAP, HEXAGON HEAD: 7/8-9 NC X 2 1/2 IN. LG D3568 (76689)	EA	12								1	2
X20		WASHER, LOCK: 7/8 IN. D3569 (76609)	EA	12								1	3
X20		COVER, PLATE, ACCESS D3543 (20263)	EA	1								1	4
P O	5330-439-2530	GASKET, ACCESS PLATE D3544 (20263)	EA	1	*	1	1				12	1	5
X20		PLUG, PIPE: 1 1/2 IN. FUEL TANK D3561 (20263)	EA	1								1	6
X20		CONNECTOR, BALL CHECK 1/8 IN. NPT X 1 3/16 IN. LG, FUEL AND OIL TANKS D3559 (20263)	EA	2								1	7
X20		PLUG, PIPE: 1 1/4 IN.OIL TANK D3560 (20263)	EA	1								1	8
X20		CLAMP WIRE ROPE THREADED: 3/4 IN. S5-58 (75535)	EA	3								1	9
X20		PENDANT, STEEL, WIRE ROPE: TRIP MECHANISM D220 (20263)	EA	1								1	10
P F	3895-401-4139	BUSHING, GUIDE: 1 1/4 IN. ID D119 (20263)	EA	1	*	*	1				9	1	11
X20		BOLT, SPUD, BRACKET: 1-14 X 3 IN. LG D250 (20263)	EA	24								1	12
X20		BRACKET, SPUD, GUIDE D3547 (20263)	EA	6								1	13
X20		BOLT, SELF-LOCKING D262 (20263)	EA	2								1	14
X20		COVER, PLATE, ACCESS: TRIP HOUSING D3551 (20263)	EA	1								1	15
X20		COVER, PLATE, ACCESS: FUEL PUMP D353A (20263)	EA	1								1	16
X20		BOLT, EXTERNAL RELIEVED BODY: 1 1/2-12 NF X 3 IN. LG D142A (20263)	EA	1								1	17
X20		LEGEND, PLATE D296 (20263)	EA	1								1	18
X20		OPERATING, INSTRUCTION PLATE 32-620 (20263)	EA	1								1	19
P O	3895-871-8384	VALVE CHECK ASSEMBLY BP1700 (20263)	EA	2	*	1	2				18	1	20
X20		PIN, STRAIGHT, HEADLESS: 3/32 IN. DIA X 27/64 IN. LG D171-4A (20263)	EA	1								1	21
P O	3895-936-7143	PLUNGER, DETENT 171-3A (20263)	EA	1	*	1	2				18	1	22
X20		INSERT, SCREW, THREADED D171-5A (20263)	EA	1								1	23

(1) SMR CODE	(2) FEDERAL STOCK NUMBER	(3) DESCRIPTION USABLE ON CODE	(4) UNIT OF MEAS	(5) QTY INC IN UNIT	(6) 30-DAY DS MAINT ALLOWANCE			(7) 30 DAY GS MAINT ALLOWANCE			(8) 1-YR ALW PER 100 EQUIP CNTGY	(9) ILLUS- TRATION	
					(a)	(b)	(c)	(a)	(b)	(c)		(a)	(b)
					1-20	21-50	51-100	1-20	21-50	51-100		FIG NO.	ITEM NO.
X20		WASHER, KEYWAY D171-2A (20263)	EA	1							1	24	
P O	3895-900-8603	SPRING, HELICAL COMPRESSION BP2015 (20263)	EA	1	*	1	2				18	1	25
X1		HOUSING, VALVE D171-1A (20263)	EA	1								1	26
		GROUP 02 - CYLINDER AND COMPONENTS											
P F	3895-401-4134	CAP, BUFFER, HOUSING: BASE ASSEMBLY, 2 1/2 IN. DIA D209 (20263)	EA	6	1	2	5				54	2	1
P F	5330-920-7293	BUMPER RUBBER: BASE ASSEMBLY, 2 1/2 IN. DIA A7904 (20263)	EA	6	1	2	5				54	2	2
X2F		PIN, GROOVED, HEADLESS: BASE ASSEMBLY, 3/16 IN. OD X 1 7/8 IN. LG D212A (83584)	EA	6								2	3
X2F		NUT, PLAIN, ROUND, BUFFER SPRING: BASE ASSEMBLY 3/4-16 NF D221 (20263)	EA	6								2	4
P F	5310-484-6301	WASHER ASSEMBLY: BASE ASSEMBLY D3508A (20263)	EA	12	2	5	9				108	2	5
P F	3895-989-3108	SCREW, BUFFER, HOUSING: 3/4-16 NF X 15 1/16 IN. LG D210A (20263)	EA	6	*	*	*				5	2	6
P F	3895-401-4135	ANVIL, BLOCK D3502 (20263)	EA	1	*	*	*				2	2	7
P F	3895-248-4616	RING, PISTON, COMPRESSION D303 (20263)	EA	8	3	6	12				144	2	8
P F	5340-868-7930	MOUNT RESILIENT CP453 (2M63)	EA	1	*	*	1				9	2	9
X2F		RETAINER, RESILIENT, MOUNT D293 (20263)	EA	1								2	10
X2F		SETSCREW, SOCKET HEAD D249A (20263)	EA	6								2	11
P F	3120-490-1871	BEARING, SLEEVE D3506 (20263)	EA	1	*	*	1				6	2	12
P F	3895-401-4136	PISTON, RAM D3501 (20263)	EA	1	*	*	1				6	2	13
P F	3895-248-4616	RING, PISTON, COMPRESSION D303 (20263)	EA	8	REF	REF	REF				REF	2	14
X		CYLINDER D3504 (20263)	EA	1								2	15
		GROUP 03 - ENGINE LUBRICATION SYSTEM											
P O	3895-871-8385	FILTER VALVE ASSEMBLY: OIL D234B (20263)	EA	1	1	2	3				36	3	1
X20		CLAMP, LOOP D125 (20263)	EA	1								3	2
P O	3895-071-8052	STRAINER, ELEMENT, FUEL 7/8 IN. ID. 3 7/16 IN. LG D132 (20263)	EA	1	*	1	2				18	3	3
X20		RING, RETAINING 5000-56 (79136)	EA	1								3	4
P O	3895-900-2353	SPRING HELICAL, COMPRESSION AP208 (20263)	EA	1	*	1	2				18	3	5

(1) SMR CODE	(2) FEDERAL STOCK NUMBER	(3) DESCRIPTION USABLE ON CODE	(4) UNIT OF MEAS	(5) QTY INC IN UNIT	(6) 30-DAY DS MAINT ALLOWANCE			(7) 30 DAY GS MAINT ALLOWANCE			(8) 1-YR ALW PER 100 EQUIP CNTGY	(9) ILLUS- TRATION	
					(a)	(b)	(c)	(a)	(b)	(c)		(a) FIG NO.	(b) ITEM NO.
					1-20	21-50	51-100	1-20	21-50	51-100			
P O	3895-871-8383	VALVE, CHECK, FUEL SYSTEM AP207 (2023)	EA	1		1	2	3			36	3	6
X1		HOUSING, VALVE D234-1A (20263)	EA	1								3	7
P O	4720-857-1736	TUBING, PLASTIC, OIL LINE: 27 FT LG MILH27267 (81349)	FT	V	*	1	1				12	4	1
X20		INVERTER NUT, COUPLINGS /16 IN. DIA X 3/32 IN. LG D180 (20263)	EA	10								4	2
P O		FERRULE, COUPLING D181 (20263)	EA	10	2	4	8				100	4	3
P O	4730-871-8376	INSERT TUBE, COUPLING: 1 1/4 IN. DIA X 1 3/16 IN. LG D182 (20263)	EA	10	2	4	8				100	4	4
X20		NUT, SELF-LOCKING HEXAGON: 3/8-24 UNF 52NEO64 (72962)	EA	4								4	5
X20		STUD, MOUNTING: 3/8-24 UNF X 1/2-20 HF 5 ROLLED THD, FOR STUD FIT, 2 3/8 IN. LG D3535 (20263)	EA	4								4	6
P O R	3895-247-3179	PUMP OIL ASSEMBLY D3538 (20263)	EA	1	*	1	1				12	4	7
X2F		PIN, STRAIGHT, HEADLESS: 3/8 IN. DIA X 3 3/8 IN. LG 03538-6 (20263)	EA	1								4	8
P F	3895-401-4281	CAM, CONTROL, OIL PUMP D3538-2 (20263)	EA	1	*	1	2 1				8	4	9
X2F		SCREW, CAP, SOCKET HEAD: 10 NC, 172 IN. LG DT33VO2JB (30084)	EA	3								4	10
X2F		KEEPER. PLATE D3538-5 (20263)	EA	1								4	11
P F	3895-248-4342	PLUNGER, OIL PIMP D3538-3 (20263)	EA	4	1	2	3				36	4	12
P F	5360-477-4921	SPRING, HELICAL, OIL PIMP D3538-4 (20263)	EA	4	1	2	3				36	4	13
X1		HOUSING, CHECK VALVE D3538-7 (20263)	EA	4								4	11
P F	4930-900-2356	SPRING, HELICAL, COMPRESSION A7770 (20263)	EA	4	1	2	3				36	2	15
X1		VALVE, BALL, LUBRICATING, OIL PUMP: 9/32 IN. DIA D136-9 (2M263)	EA	1								4	16
X20		PLUG, PIN, SERRATED 1S (92555)	EA	5								4	17
X20		PLUG PIPE: 1/8 IN. D140 (20263)	EA	4								4	18
X1		HOUSING, OIL PUMP D3538-1 (20263)	EA	1								4	19
GROUP 04 - DIESEL STARTING CONTROLS													
P O	3895.871-8385	FILTER, VALVE ASSEMBLY, FUEL D234B (20263)	EA	1	REF	REF	REF				REF	5	1
X20		CLAMP, LOOP D125 (20263)	EA	1								5	2

(1) SMR CODE	(2) FEDERAL STOCK NUMBER	(3) DESCRIPTION USABLE ON CODE	(4) UNIT OF MEAS	(5) QTY INC IN UNIT	(6) 30-DAY DS MAINT ALLOWANCE			(7) 30 DAY GS MAINT ALLOWANCE			(8) 1-YR ALW PER 100 EQUIP CNTGY	(9) ILLUS- TRATION	
					(a)	(b)	(c)	(a)	(b)	(c)		(a)	(b)
					1-20	21-50	51-100	1-20	21-50	51-100		FIG NO.	ITEM NO.
P O	3895-071-8052	STRAINER, ELEMENT FUEL: 7/8 IN. ID, 3 7/16 IN. LG D132 (20263)	EA	1	REF	REF	REF				REF	5	3
X20		RING, RETAINING 5000-56 (79136)	EA	1								5	4
P O	3895-900-2353	SPRING, HELICAL, COMPRESSION AP208 (20263)	EA	1	REF	REF	REF				REF	5	5
P O	3895-871-8383	VALVE CHECK, FUEL SYSTEM AP207 (20263)	EA	1	REF	REF	REF				REF	5	6
X1		HOUSING, VALVE D234-1A (20263)	EA	1								5	7
P O R	3895-247-3177	PUMP, FUEL, REMOTE CONTROL D323R (20263)	EA	1	*	*	*				2	6	1
X20		PIN, STRAIGHT, HEADLESS: 19/32 IN. DIA X 3 1/16 IN. LG D123-3 (20263)	EA	1								6	2
P O	3895-868-7931	CAM, CONTROL CP504 (20263)	EA	1	*	1	1				12	6	3
X20		CABLE CONTROL ASSEMBLY, FUEL PUMP: 1/4 IN. DIA, 4 FT LG D123-36 (20263)	EA	1								6	4
X2F		SCREW, CAP, HEXAGON HEAD: 5/16-24 UNF X 1/2 IN. LG D123-27 (76689)	EA	2								6	5
X2F		LOCK PLATE D123-26 (20263)	EA	1								6	6
X20		STOP, CAM WEAR CAP. FUEL PUMP D123-4 (20263)	EA	1								6	7
X2F		NUT, PLAIN: FUEL PUMP D123-6 (20263)	EA	1								6	8
P F	3895-218-4344	PUSH ROD D123-5B (20263)	EA	1	*	*	1				6	6	9
X2F		PIN, STRAIGHT, HEADLESS: 3/16 IN. DIA X 1/2 IN. LG D123-32 (72962)	EA	2								6	10
P F	3895-401-4141	PISTON, CYLINDER D323-9B (20263)	EA	1	*	1	2				6	6	11
P F	5360-477-4922	SPRING, HELICAL, COMPRESSION: 1/2 IN. DIA, 5 IN. LG D223-47 (20263)	EA	1	*	*	1				6	6	12
X2F		SPACER, STEPPED, SLEEVE FUEL PUMP D123-7 (20263)	EA	1								6	13
X2F		WASHER, FLAT FLAT, FUEL PUMP: 1 21/64 IN. CD, 1 5/16 IN. ID D123-11 (202631)	EA	1								6	14
P F	5330-198-6183	PACKING, PREFORMED AN6227B24 (88044)	EA	1	1	1	2				25	6	15
X2F		WASHER, FLAT, GASKET FUEL PUMP: 1 17/32 IN. OD, 1 3/16 IN. ID D123-13 (20263)	EA	1								6	16
X2F		BOLT, FUEL PASSAGE, FUEL PUMP D123-30 (20263)	EA	2								6	17
X2F		ADAPTER, FUEL PASSAGE D123-31 (20263)	EA	2								6	18
X2F		NUT, SELF-LOCKING, HEXAGON D123-17 (20263)	EA	1								6	19

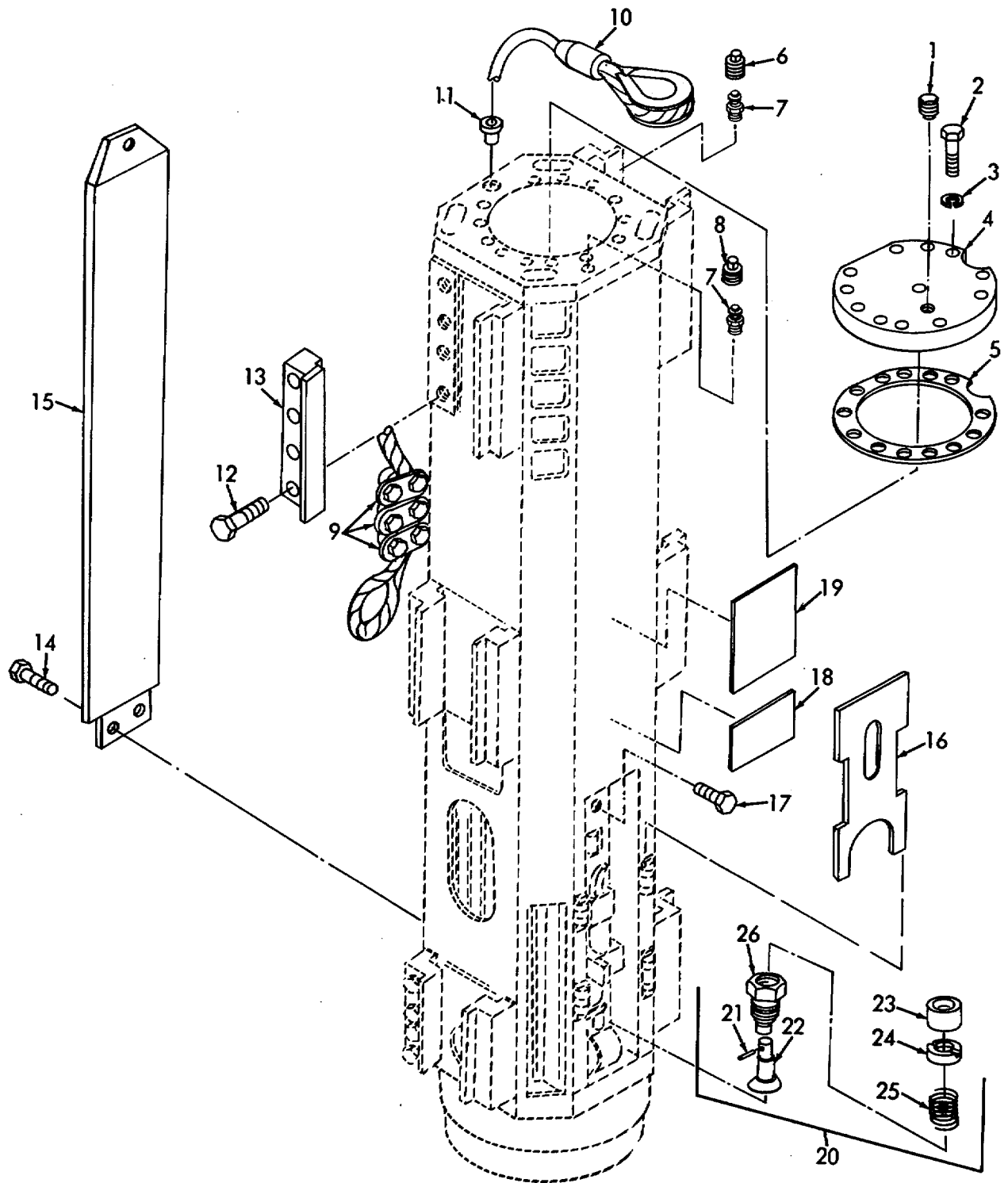
(1) SMR CODE	(2) FEDERAL STOCK NUMBER	(3) DESCRIPTION USABLE ON CODE	(4) UNIT OF MEAS	(5) QTY INC IN UNIT	(6) 30-DAY DS MAINT ALLOWANCE			(7) 30 DAY GS MAINT ALLOWANCE			(8) 1-YR ALW PER 100 EQUIP CNTGY	(9) ILLUS- TRATION	
					(a)	(b)	(c)	(a)	(b)	(c)		(a)	(b)
					1-20	21-50	51-100	1-20	21-50	51-100		FIG NO.	ITEM NO.
X2F		SPRING, HELICAL, COMPRESSION D123-16 (20263)	EA	1								6	20
P F	3895-868-7932	VALVE, CHECK, FUEL PUMP AP511 (20263)	EA	1	1	1	2				24	6	21
X2F		SPACER, STEPPED, FUEL PUMP D123-15A (20263)	EA	1								6	22
X20		NUT, SELF-LOCKING, HEXAGON: 5/16-18 UNC 42NEO58 (72962)	EA	4								6	23
X20		BOLT, PLAIN, HEXAGON: 5/16-18 NC X 1 1/2 IN. LG D223-61 (76689)	EA	2								6	24
X20		BOLT, PLAIN, HEXAGON: 5/16-18 NC X 1 IN. LG 0223-60 (76689)	EA	2								6	25
X20		CLAMP, HOSE, REMOTE CONTROL D223-58 (20263)	EA	1								6	26
X20		WIRE ROPE ASSEMBLY, REMOTE CONTROL D223-57 (20263)	EA	2								6	27
X20		NUT, SELF-LOCKING: 1/4-20 UNC 21NTEO40 (72962)	EA	1								6	28
X20		VALVE, BLEED, REMOTE CONTROL D223-54 (20263)	EA	1								6	29
X20		SEAT, DRAIN VALVE D223-62 (20263)	EA	1								6	30
X2F		ADAPTER. FITTING, REMOTE CONTROL D223-48 (20263)	EA	1								6	31
P F	5330-297-6868	PACKING, PREFORMED AN6290-10 (88044)	EA	1	1	1	2				24	6	32
P F	5330-490-6475	PACKING, PREFORMED 85-0050-4 (15681)	EA	1	*	1	1				12	6	33
X2F		PLUNGER D223-46 (20263)	EA	1								6	34
P F	3895-902-4118	SPRING HELICAL, COMPRESSION: 1 1/4 IN. DIA, 7 1/2 IN. LG A9873 (20263)	EA	1	*	1	1				12	6	35
X2F		PLUG, HEXAGON HEAD D223-49 (20263)	EA	1								6	36
P F	5330-297-6868	PACKING, PREFORMED AN6290-10 (88014)	EA	1	REF	REF	REF				REF	6	37
X2F		SCREW. CAP, HEXAGON HEAD: 5/16-24 UNF, 1/2 IN. LG D123-27 (76'i)	EA	4								6	38
P F	5330-850-6652	PACKING PREFORMED 2-20 (45681)	EA	2	1	1	2				24	6	39
P F	3895-401-4142	SCREEN, PLUNGER, REMOTE CONTROL D223-53 (20263)	EA	2	1	1	2				24	6	40
X1		HOUSING REMOTE CONTROL D223-45 (20263)	EA	1								6	41
X20		NUT, SELF-LOCKING, HEXA6GN: 3/8-24 UNF 52NEO64 (72962)	EA	6								6	42
X1		HOUSING, FUEL PUMP D123-1R (20263)	EA	1								6	43
X20		STUD, MOUNTING: 1/2 IN. DIA X 3 1/2 IN. LG, 3/8-24 NF, ONE END D3527 (20263)	EA	6								6	44

(1) SMR CODE	(2) FEDERAL STOCK NUMBER	(3) DESCRIPTION USABLE ON CODE	(4) UNIT OF MEAS	(5) QTY INC IN UNIT	(6) 30-DAY DS MAINT ALLOWANCE			(7) 30 DAY GS MAINT ALLOWANCE			(8) 1-YR ALW PER 100 EQUIP CNTGY	(9) ILLUS- TRATION	
					(a)	(b)	(c)	(a)	(b)	(c)		(a)	(b)
					1-20	21-50	51-100	1-20	21-50	51-100		FIG NO.	ITEM NO.
P O	4720-857-1736	TUBING, PLASTIC, OIL LINE: 8 FT LG MILH27267 (81349)	FT	8	REF	REF	REF				REF	6	45
X20		NUT, TUBE: 3/16 IN. DIA X 3/32 I N. LG D180 (20263)	EA	4								6	46
P O		FERRULE, COUPLING D181 (20263)	EA	4	REF	REF	REF				REF	6	47
P O	4730-871-8376	INSERT, TUBE, COUPLING: 1/4 IN. DIA 1 3/16 IN. LG D182 (20263)	EA	4	REF	REF	REF				REF	6	48
X20		VENT LINE, PLUMP: 1/4 IN. ID X 3/8 IN. OD, 8 FT LG 22-249 (20263)	EA	1								6	49
X20		ADAPTER PIPE TUBE D215 (20263)	EA	1								6	50
X20		INSERT, TUBE, COUPLING: 3/8 IN. DIA X 9/16 IN. LG 5605-4 (02570)	EA	1								6	51
X20		FERRULE, COUPLING: 1/2 IN. DIA X 3/8 IN. LG 6TVS (45681)	EA	1								6	52
X20		INVERTED NUT, TUBE: 3/16 IN. X 3/32 IN. LG D287 (20263)	EA	1								6	53
P O	4710-901-9645	TUBING, PLASTIC: 7/32 IN. ID X 3/8 IN. OD, 6 FT LG NS12H (83616)	FT	8	*	1	1				12	6	54
P O	3895-401-4143	FILTER, BREATHER D286 (20263)	EA	1	*	*	1				9	6	55
X20		TRIP MECHANISM ASSEMBLY 42-162 (20263)	EA	1								7	1
P O	5330-187-3638	PACKING, PREFORMED AN6227B5 (88044)	EA	4	2	3	6				72	7	2
X20		PIN, GROOVED, HEADLESS: 1 IN. DIA, 6 3/8 IN. LG D216-12 (20263)	EA	1								7	3
P O	3895-900-8602	SPRING, HELICAL, COMPRESSION: 1 7/8 IN. LG A9595 (20263)	EA	1	*	*	1				9	7	4
X20		PIN, GROOVED, HEADLESS: 1 IN. DIA, 6 3/8 IN. LG D216-11 (20263)	EA	1								7	5
X20		PIN, STRAIGHT, HEADLESS: 1 IN. DIA X 3 1/2 IN. LG D216-9 (20263)	EA	1								7	6
X20		CAM, CONTROL D216-8 (20263)	EA	1								7	7
X20		PIN, STRAIGHT, HEADLESS: 1 IN. DIA X 1 3/4 IN. LG D216-10 (20263)	EA	1								7	8
P O	3895-989-3411	LINK, TRIP MECHANISM D216-6 (20263)	EA	1	4	8	17				200	7	9
P O	3895-248-4343	HOOK, TRIP MECHANISM D216-7A (20263)	EA	1	*	1	1				12	7	10
X20		PLUG, TRIP MECHANISM IN. DIA, 1 1/4 IN. LG D3516-5 (20263)	EA	1								7	11
X20		PIN, STRAIGHT, HEADLESS: 1 1/8 IN. DIA X 5 7/16 IN. LG 03916-18 (20263)	EA	1								7	12

(1) SMR CODE	(2) FEDERAL STOCK NUMBER	(3) DESCRIPTION USABLE ON CODE	(4) UNIT OF MEAS	(5) QTY INC IN UNIT	(6) 30-DAY DS MAINT ALLOWANCE			(7) 30 DAY GS MAINT ALLOWANCE			(8) 1-YR ALW PER 100 EQUIP CNTGY	(9) ILLUS- TRATION	
					(a)	(b)	(c)	(a)	(b)	(c)		(a)	(b)
					1-20	21-50	51-100	1-20	21-50	51-100		FIG NO.	ITEM NO.
P O	3895-989-3410	SPRING, HELICAL, COMPRESSION: 3 5/8 IN. FREE LG D216-2 (20263)	EA	1	*	1	2				18	7	13
X20		PLUNGER, DETENT CAP, TRIP MECHANISM D216-4 (20263)	EA	1								7	14
X1		HOUSING, TRIP MECHANISM D3516;-1 (20263)	EA	1								7	15
P O	5340-498-4605	BUMPER, RUBBER D217A (20263)	EA	1	*	1	1				12	7	16
P O		TRIP, SAFETY MECHANISM D3573 (20263)	EA	1	*	*	*				3	8	1
M O		ROPE, MANILA: 3/8 IN. DIA A X 70 FT LG TR605 (81349) MANUFACTURE FROM: ROPE, MANILA, AS REQUIRED, FSN 4020-689-5688	EA	1								8	2
X20		CABLE CONTROL ASSEMBLY: 1/4 IN. DIA, 24 FT LG D123-36 (2063)	EA	1								8	3
X20		SETSCREW, SOCKET HEAD: 5/8-18THD SIZE D273-3 (20263)	EA	1								8	4
P O	3895-401-4145	PIN TRIP, SAFETY MECHANISM: 1 IN. DIA, 7 IN. LG D273-2 (2A0263)	EA	1	*	1	1				12	8	5
P O	3895-401-4144	TRIP, STOP, SAFETY MECHANISM D3573-1 (20263)	EA	1	*	1	1				12	8	6
X20		PLUNGER DETENT D216-4 (20263)	EA	1								8	7
P O	3895-989-3410	SPRING; HELICAL, COMPRESSION D216-2 (20263)	EA	1	REF	REF	REF				REF	8	8
X20		SETSCREW, SOCKET HEAD: 5/8-18 X 2 1/2 IN. LG, W/NYLON INSERT D273-4 (20263)	EA	1								8	9
P O R	3895-247-3152	TRANSMITTER ASSEMBLY D224 (20263)	EA	1	*	*	*				3	9	1
P O	4720-236-2655	HOSE ASSEMBLY: 7 7/8 IN. LG D229 (20263)	EA	1	*	1	2				18	9	2
P O	4730-249-4262	COUPLING, SELF-SEALING: 1/8 IN. NPT, BOTH ENDS, 3 3/8 IN. LG 5100-4 (99879)	EA	5	1	2	3				40	9	3
P O	4720-236-2656	HOSE, REMOTE CONTROL: 25 FT 1 3/4 IN. LG 0230 (20263)	EA	4	1	1	3				35	9	4
X20		NUT, HEXAGON: 1/4-20 NC D224-11 (76689)	EA	4								9	5
X20		WASHER, LOCK: 1/4 IN. D224-10 (76689)	EA	4								9	6
X20		SCREW, CAP, HEXAGON HEAD: 1/4-20 NC X 4 IN. LG D224-9 (76689)	EA	4								9	7
X20		NUT, HEXAGON: 1/4-20 NC D224-11 (76689)	EA	4								9	8
X20		WASHER, LOCK: 1/4 IN. D224-10 (76689)	EA	4								9	9

(1) SMR CODE	(2) FEDERAL STOCK NUMBER	(3) DESCRIPTION USABLE ON CODE		(4) UNIT OF MEAS	(5) QTY INC IN UNIT	(6) 30-DAY DS MAINT ALLOWANCE			(7) 30 DAY GS MAINT ALLOWANCE			(8) 1-YR ALW PER 100 EQUIP CNTGY	(9) ILLUS- TRATION	
						(a)	(b)	(c)	(a)	(b)	(c)		(a) FIG NO.	(b) ITEM NO.
						1-20	21-50	51-100	1-20	21-50	51-100			
X20			SCREW, CAP, SOCKET HEAD: 1/4-20 NC X 2 1/2 IN. LG D265 (20263)	EA	4								9	10
X20			PLATE, SUPPORT, REMOTE CONTROL D264 (20263)	EA	1								9	11
X20			NIPPLE, PIPES 1/8 IN. NPT X 3/4 IN. LG 2084-2-3-4 (20263)	EA	2								9	12
X20			VENT, AIR: 1/8 IN. NPT X 3/4 IN LG 705 (20263)	EA	1								9	13
P O	6685-075-4694		GAGE PRESSURE: 200 PSI, 1/8 IN. NPT D257 (20263)	EA	1	*	*	1				6	9	14
X20			CROSS PIPE: 1/8 IN. NPT 2080-2-2 (20263)	EA	1								9	15
X20			BUSHING, PIPE: 1/8 IN. NPT INSIDE X 1/4 IN. NPT OUTSIDE X 3/4 IN. LG 2081-4-2 (20263)	EA	1								9	16
P O	4820-248-3700		VALVE, CHECK, RELIEF: 2 IN. W, 3 IN. LG CRS400-2S400S (79976)	EA	1	*	1	2				18	9	17
X20			SPRING, HELICAL COMPRESSION LC042E13 (20263)	EA	2								9	18
X20			CHECK BALL: 3/8 IN. DIA D269 (2A02L3Y8)	EA	2								9	19
X20			CONNECTOR, PIPE: 1/4 NPT x 1 3/8 IN. LG 2083-4-4 (20263)	EA	1								9	20
X20			HANDLE, TRANSMITTER 20B026 (20263)	EA	1								9	21
X20			CAP 20A022 (20263)	EA	1								9	22
P O	5330-498-4542		GASKET 20A023 (20263)	EA	1	1	2	3				36	9	23
X20			SCREW, MACHINE, BUTTON HEAD: 8-32 x 1/4 IN. LG D224-17 (20263)	EA	3								9	24
X20			WASHER, LOCK: NO. 8 MS35338-4 (96906)	EA	3								9	25
X20			SEGMENT, LATCH D224-2 (20263)	EA	1								9	26
X2F			SCREW, MACHINE FILLISTER HEAD: 12-24 X 1 1/4 IN. LG D224-21 (20263)	EA	4								9	27
X2F			WASHER, LOCK: NO. 12 D224-22 (20263)	EA	4								9	28
X2F			COVER 20B127 (20263)	EA	1								9	29
X2F			RING, RETAINING D224-27 (20263)	EA	2								9	30
X2F			PIN 20A179 (20263)	EA	1								9	31
X2F			PISTON ASSEMBLY 20A305 (20263)	EA	1								9	32
P F	5330-618-2517		PACKING PREFORMED AN6227B19 (88044)	EA	2	1	1	2				24	9	33

(1) SMR CODE	(2) FEDERAL STOCK NUMBER	(3) DESCRIPTION USABLE ON CODE	(4) UNIT OF MEAS	(5) QTY INC IN UNIT	(6) 30-DAY DS MAINT ALLOWANCE			(7) 30 DAY GS MAINT ALLOWANCE			(8) 1-YR ALW PER 100 EQUIP CNTGY	(9) ILLUS- TRATION	
					(a)	(b)	(c)	(a)	(b)	(c)		(a)	(b)
					1-20	21-50	51-100	1-20	21-50	51-100		FIG NO.	ITEM NO.
X2F		HOUSING AND SEAL 20A288 (20263)	EA	2								9	34
X2F		BEARING 20A182 (20263)	EA	2								9	35
X2F		ROCKER ARM ASSEMBLY: TRANSMITTER 20B065 (20263)	EA	1								9	36
X2F		SYNCHRONIZING TUBE ASSEMBLY 20A306 (20263)	EA	1								9	37
X1		HOUSING, TRANSMITTER 20D046 (20263)	EA	1								9	38
P O	5340-618-0245	PLUG, DUST: HOSE COUPLING, 7/8 IN. DIA X 1 1/4 IN. LG 5100S9 (20263)	EA	5	1	2	4				45	9	39
P O	5340-498-4594	CAP DUSTs HOSE ASSEMBLY, 7/8 IN. DIA X 5/8 IN. LG 5100S7 (20263)	EA	5	1	2	4				45	9	40
		GROUP 05 - PILE DRIVING ATTACHMENTS											
P O	3895-401-4146	GAGE ASSEMBLY AIR D3566A (20263)	EA	1	*	*	1				8	10	1
X20		HOUSING, AIR GAGE D3566A2 (20263)	EA	1								10	2
X1		GAGE, AIR 8810 (5377)	EA	1								10	3
P O	5330-601-4932	SEAL, AIR GAGE 600-001-1-2 (83259)	EA	1	*	1	1				12	10	4
X20		CAP AIR GAGE D3566A3 (20263)	EA	1								10	5
X20		COUPLING, REDUCER: 1/4 IN. TO 1/8 IN. PIPE 3300X4X2 (79470)	EA	1								10	6
P O	4720-236-2656	HOSE, CONTROL, REMOTE: 25 FT. 1 3/4 IN. LG D230 (20263)	EA	1	REF	REF	REF				REF	10	7
X20		SOCKET, QUICK CONNECTING 2H1G11 (73992)	EA	1								10	8
X20		PLUG, QUICK CONNECTING 2KIG20 (7392)	EA	1								10	9
P O	3895-989-3118	DISK, CUSHION BLOCK, PLASTIC: 2 IN. THK, 18 1/2 IN. DIA D278 (20263)	EA	3	1	1	2				24	11	1
X20		CAP, UNIVERSAL, PILE F9474 (20263)	EA	1								11	2
X20		FILLER PIECE, UNIVERSAL DRIVE CAP C9583 (20263)	EA	1								11	3
X20		CAP, CONCRETE, PILE: 16 IN. DIA 62-095 (20263)	EA	1								11	4
X20		CLAMP, WIRE ROPE: 1/2 IN. D176 (75535)	EA	4								11	5
P O		WIRE ROPE, STEEL: 1/2 IN. DIA, 6 FT LG D175 (20263)	EA	2	*	*	1				6	11	6
X20		CAP, SHEET, PILE DRIVE 32-221 (20263)	EA	1								11	7



ME 3895-332-23P/1

Figure 1. Covers, Access Plates and Related Parts

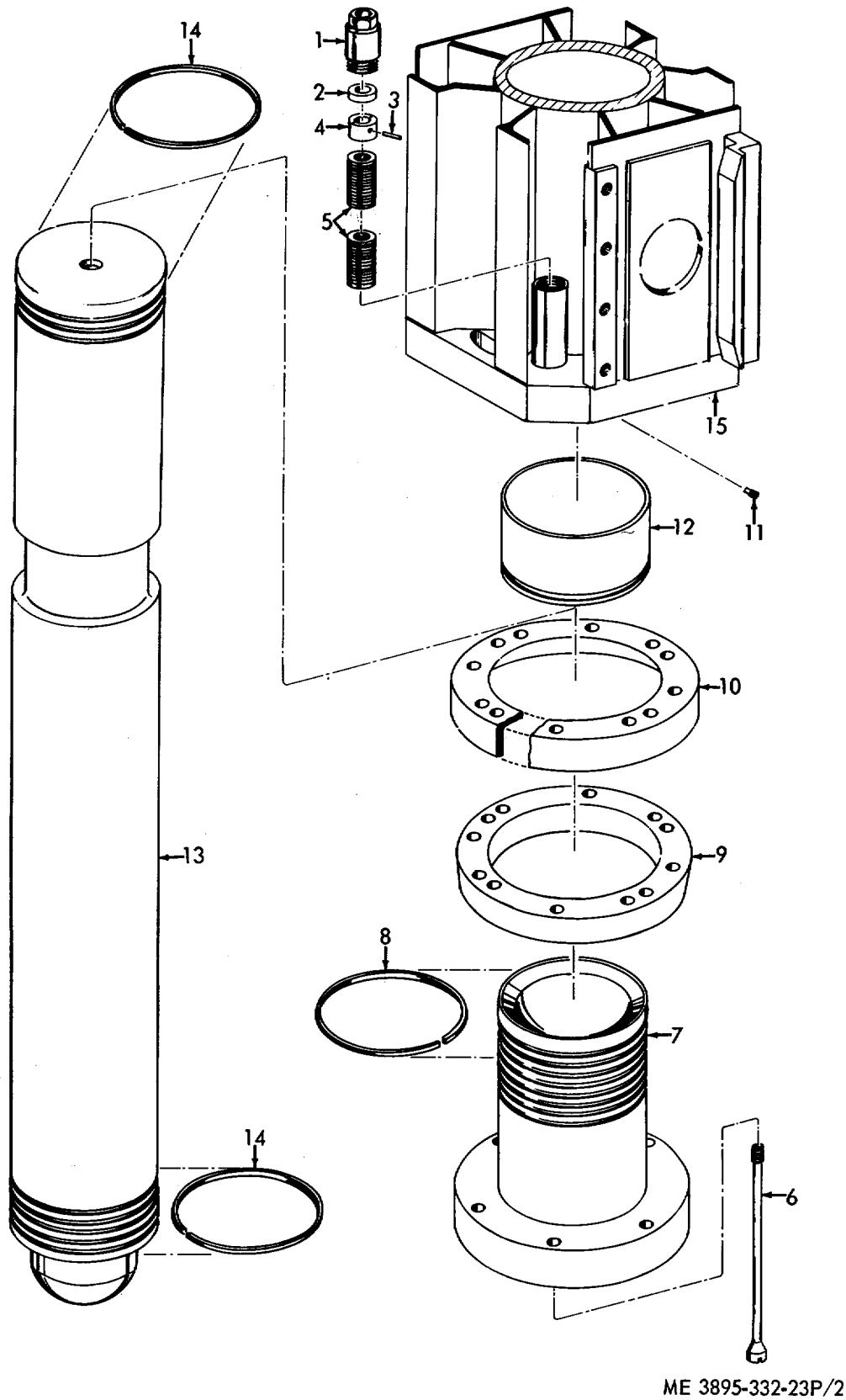
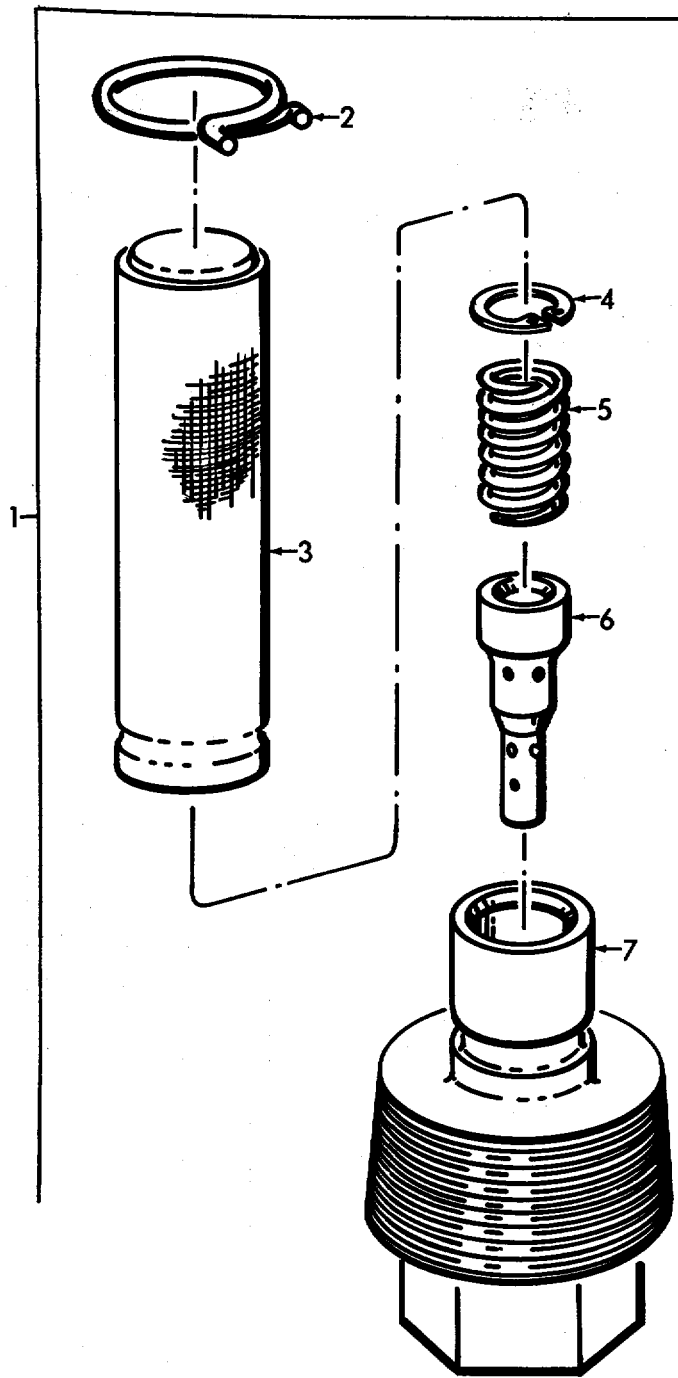
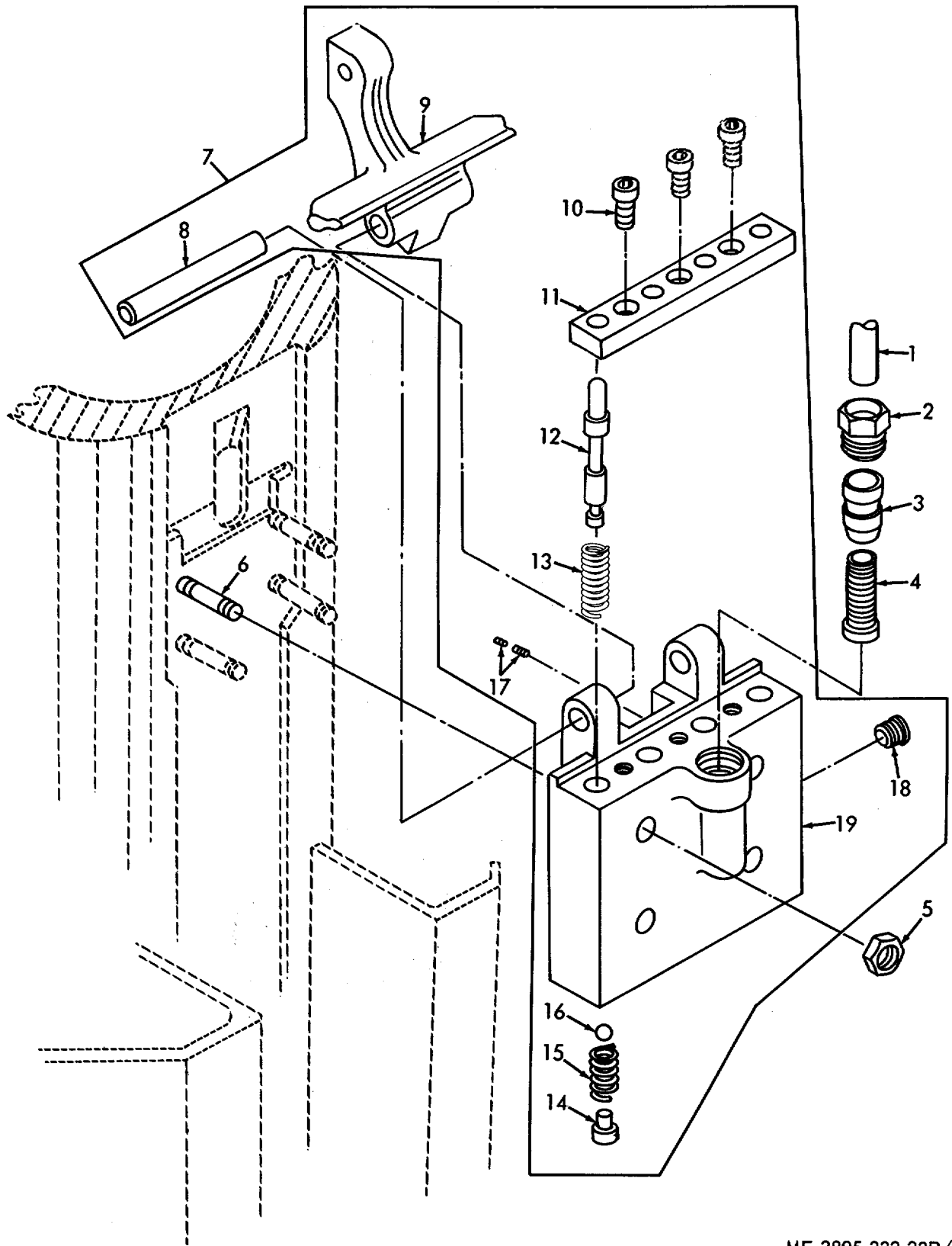


Figure 2. Cylinder and Components



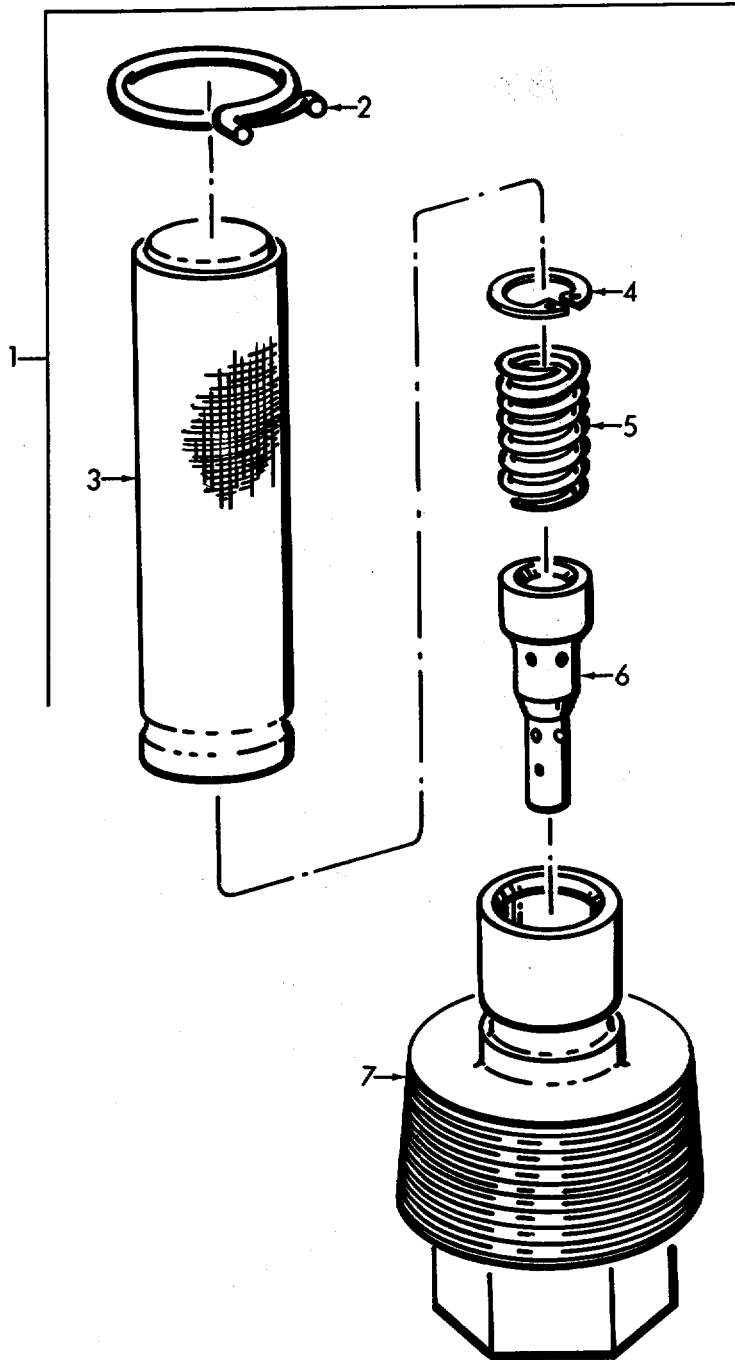
ME 3895-332-23P/3

Figure 3. Oil Filter



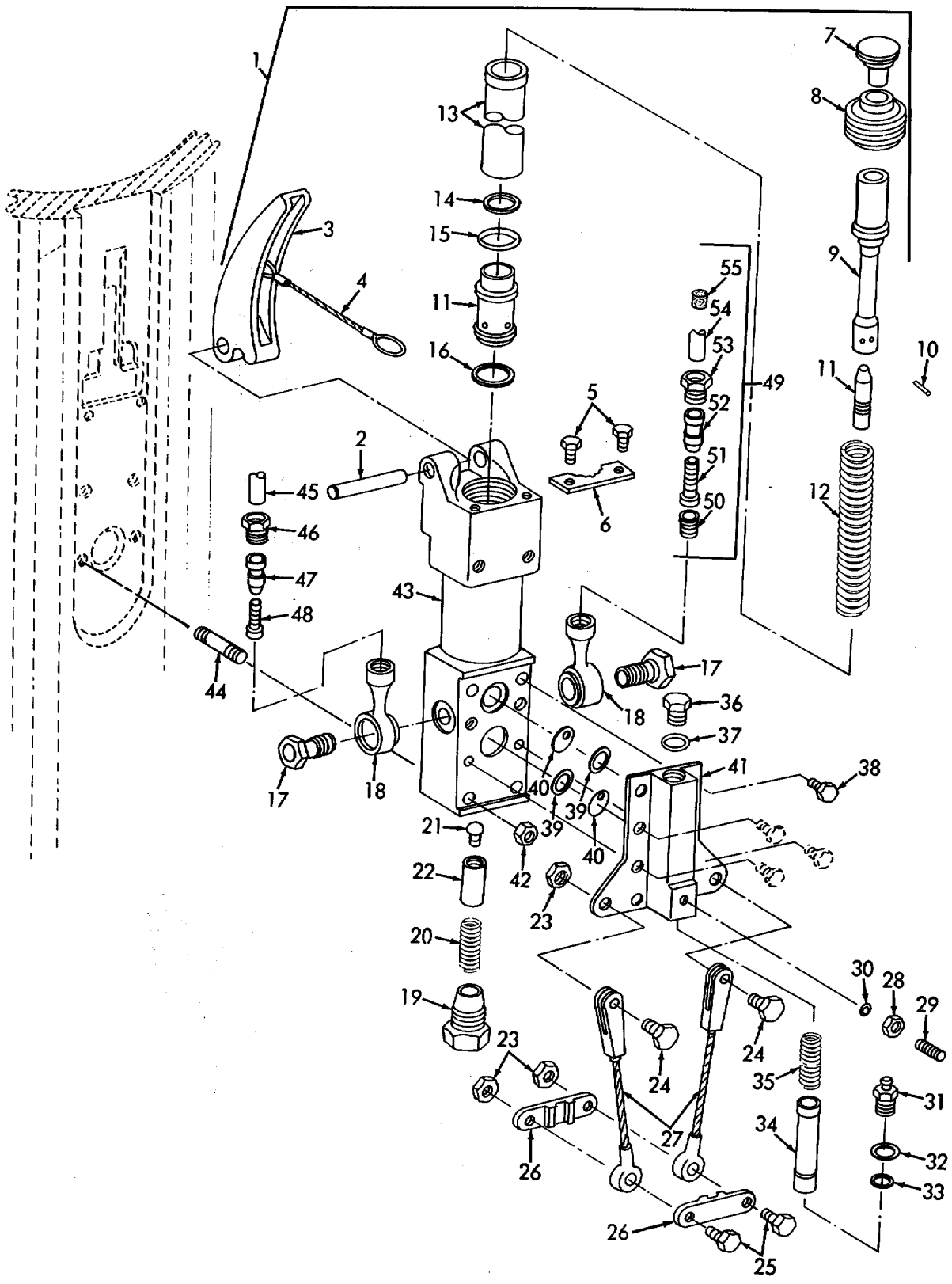
ME 3895-332-23P/4

Figure 4. Oil Pump



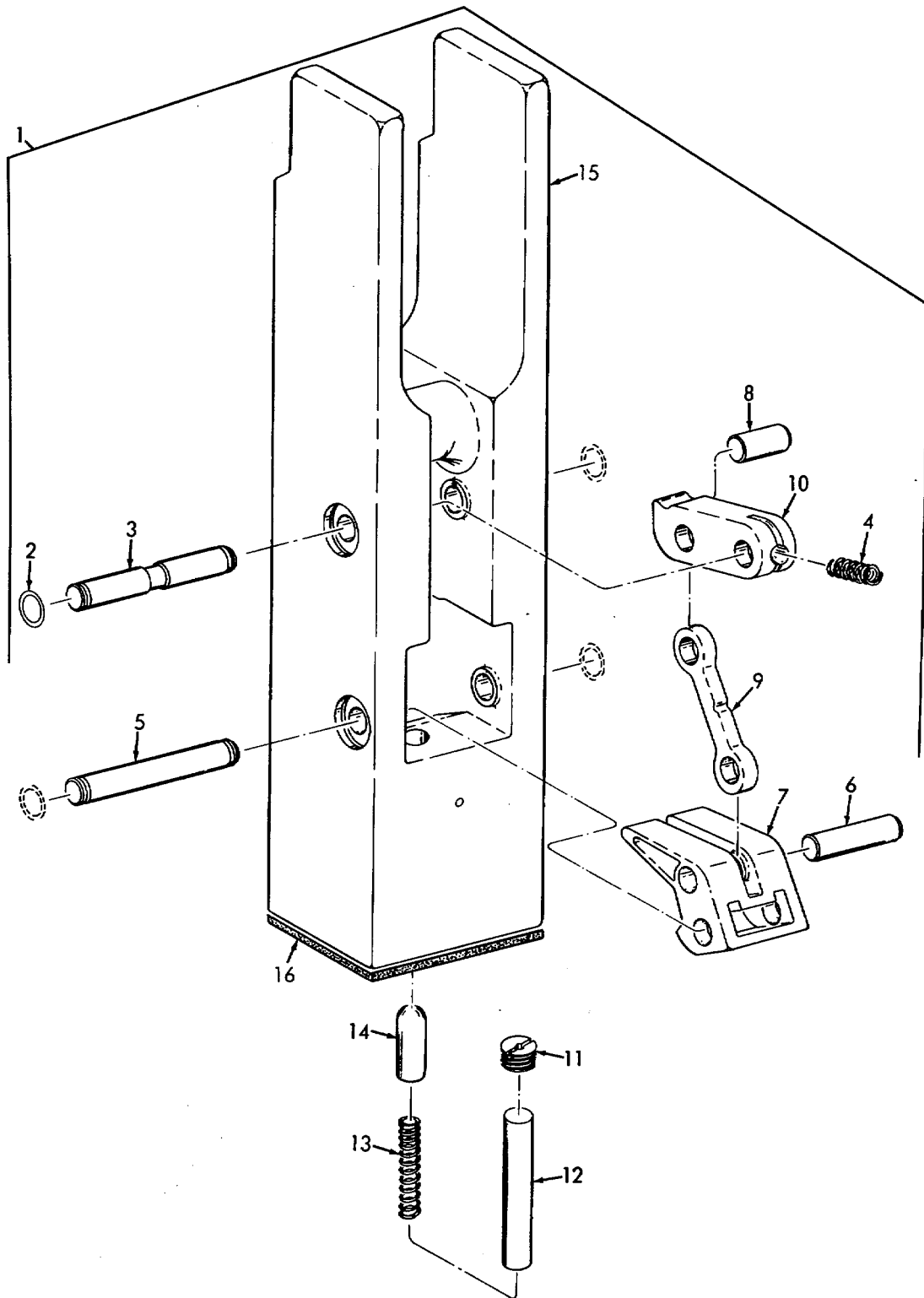
ME 3895-332-23P/5

Figure 5. Fuel Filter



ME 3895-332-23P/6

Figure 6. Fuel Pump



ME 3895-332-23P/7

Figure 7. Trip Mechanism

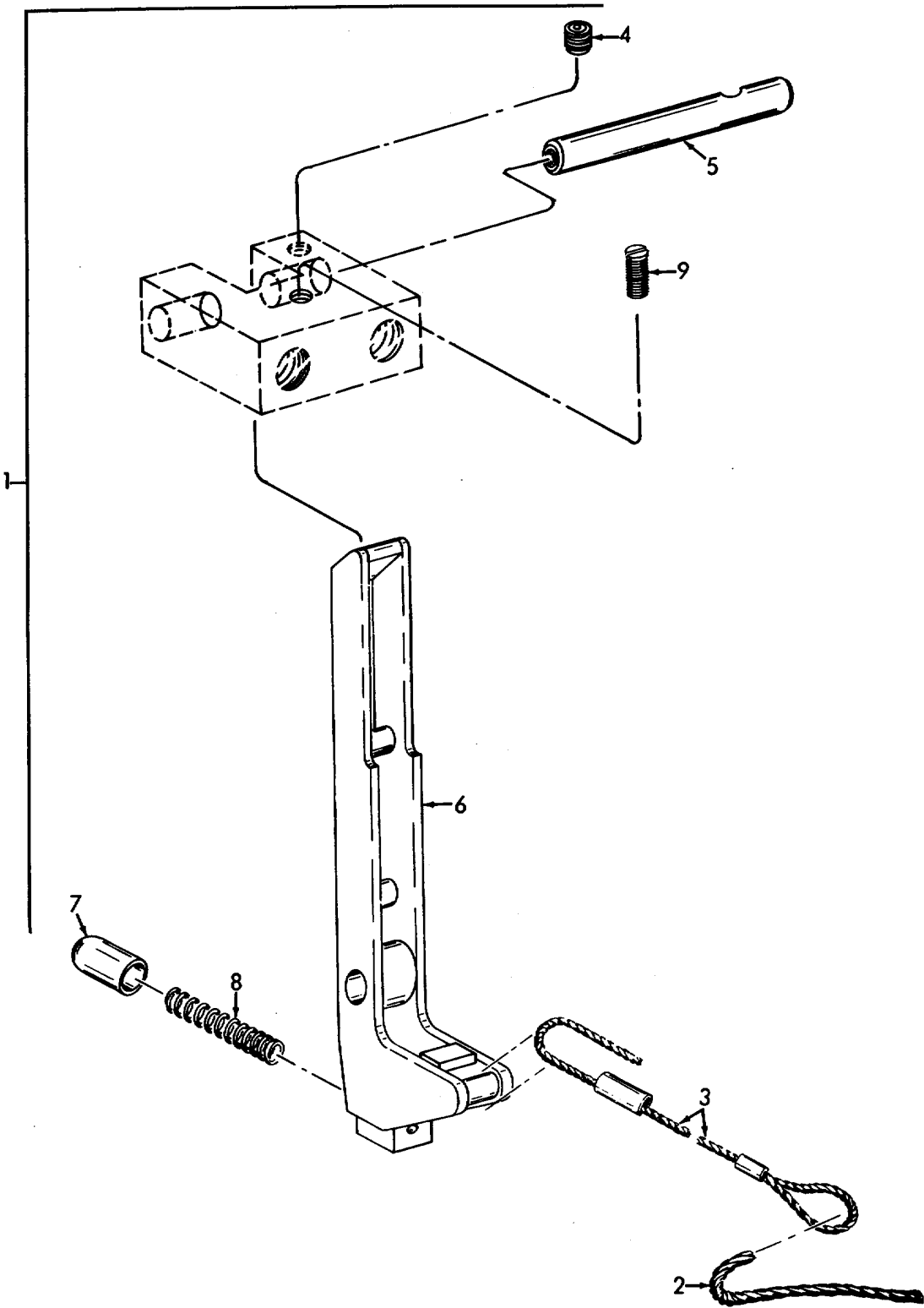
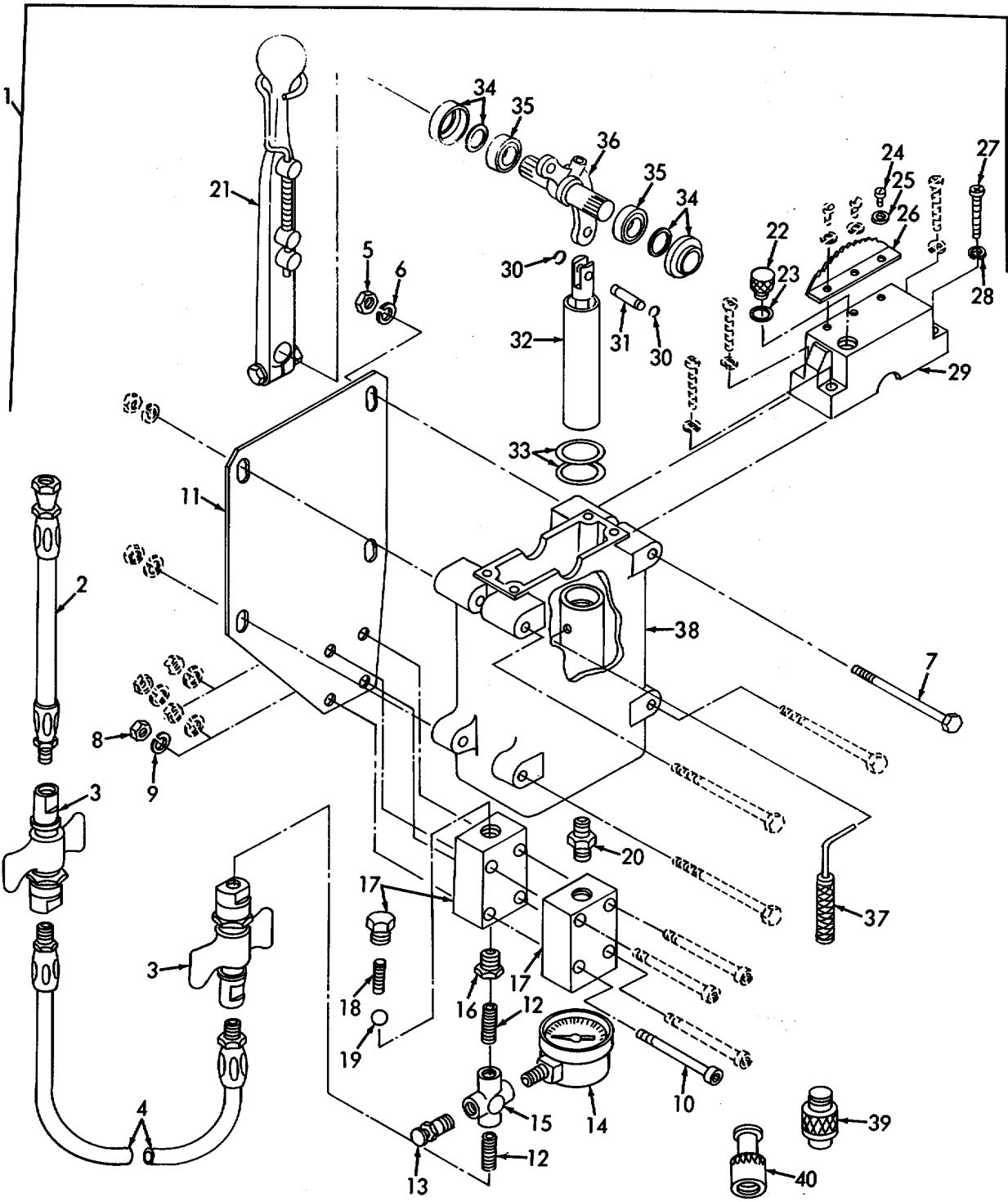


Figure 8. Trip Safety Mechanism

ME 3895-332-23P/8



ME 3895-332-23P/9

Figure 9. Transmitter

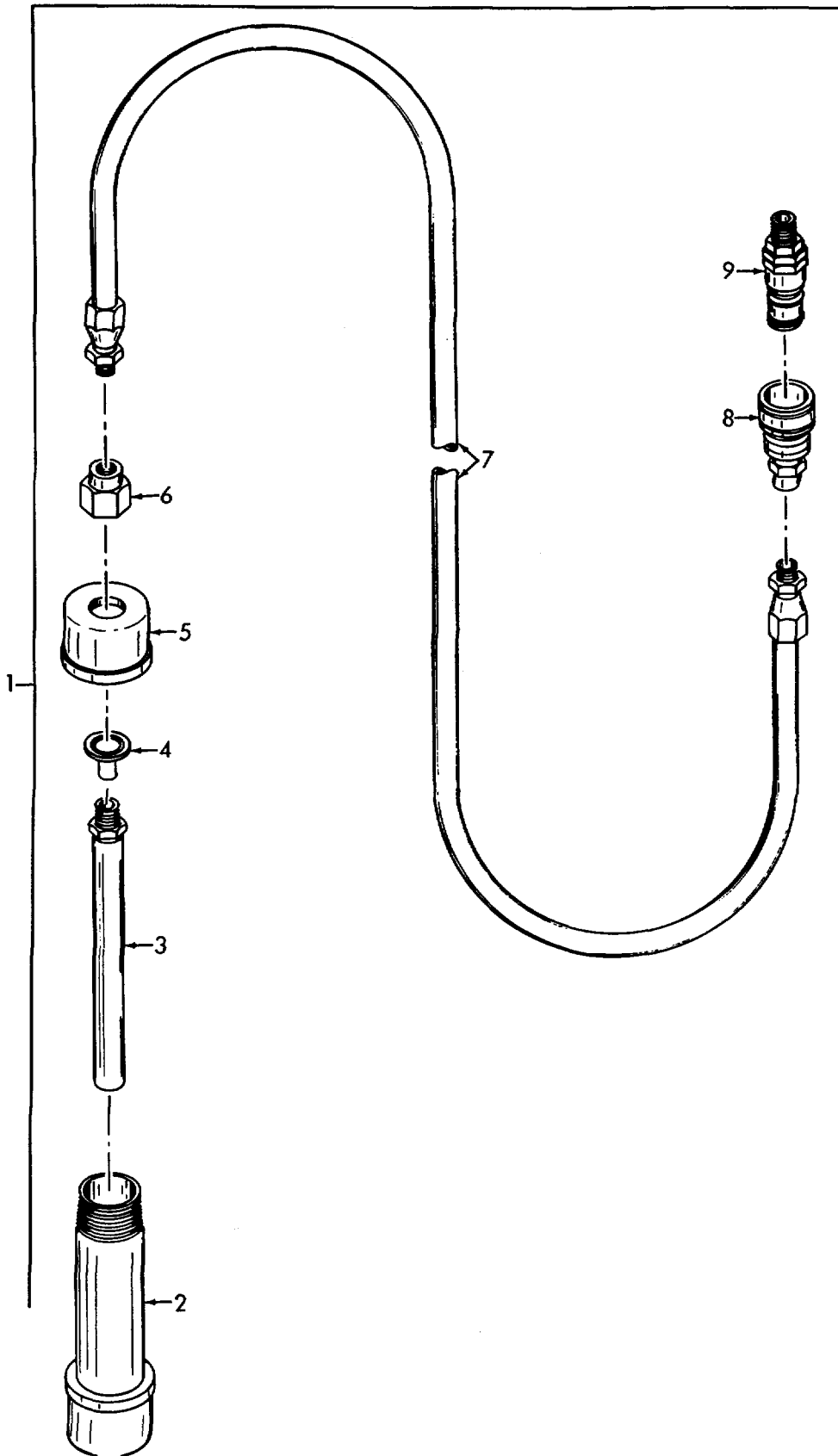
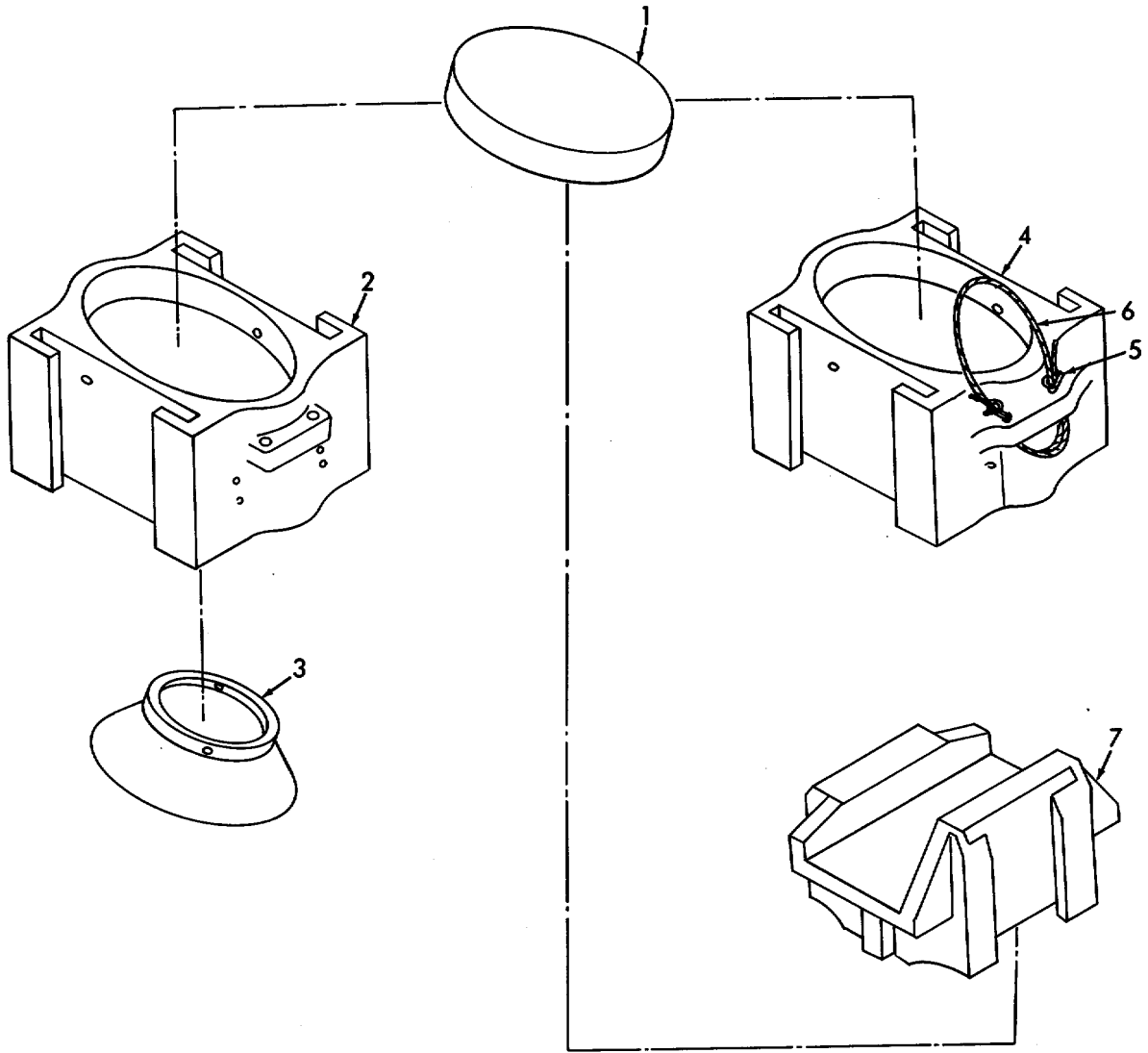


Figure 10. Air Gage

ME 3895-332-23P/10



ME 3895-332-23P/11

Figure 11. Drive Caps

**Section VII. INDEX-FEDERAL STOCK NUMBER AND REFERENCE NUMBER
CROSS-REFERENCE TO FIGURE AND ITEM NUMBER**

<u>Reference No.</u>	<u>Mfg Code</u>	<u>Fig. No.</u>	<u>Item No.</u>	<u>Reference No.</u>	<u>Mfg Code</u>	<u>Fig. No.</u>	<u>Item No.</u>
AN6227B19	88044	9	33	D223-49	20263	6	36
AN6227B24	88044	6	15	D223-54	20263	6	29
AN6227B5	88044	7	2	D223-57	20263	6	27
AN6290-10	88044	6	32	D223-58	20263	6	26
	88044	6	37	D223-60	76689	6	25
AP207	20263	3	6	D223-61	76689	6	24
	20263	5	6	D223-62	20263	6	30
AP208	20263	3	5	D224	20263	9	1
	20263	5	5	D224-10	76689	9	6
AP511	20263	6	21		76689	9	9
A7770	20263	4	15	D224-11	76689	9	5
A7904	20263	2	2		76689	9	8
A9595	20263	7	4	D224-17	20263	9	24
A9873	20263	6	35	D224-2	20263	9	26
BP1700	20263	1	20	D224-21	20263	9	7
BP2015	20263	1	25	D224-22	20263	9	28
CP453	20263	2	9	D224-27	20263	9	30
CP504	20263	6	3	D224-9	76689	9	7
CRS400-2S400S	79976	9	17	D229	20263	9	2
C9583	20263	11	3	D230	20263	9	4
DT33V02J8	30084	4	10		20263	10	7
D119	20263	1	11	D234-1A	20263	3	7
D123-1R	20263	6	43		20263	5	7
D123-11	20263	6	14	D234B	20263	3	1
D123-13	20263	6	16		20263	5	1
D123-15A	20263	6	22	D249A	20263	2	11
D123-16	20263	6	20	D250	20263	1	12
D123-17	20263	6	19	D257	20263	9	14
D123-26	20263	6	6	D262	20263	1	14
D123-27	76689	6	5	D264	20263	9	11
	76689	6	38	D265	20263	9	10
D123-3	20263	6	2	D269	20263	9	19
D123-30	20263	6	17	D273-2	20263	8	5
D123-31	20263	6	18	D273-3	20263	8	4
D123-32	72962	6	10	D273-4	20263	8	9
D123-36	20263	8	3	D278	20263	11	1
D123-4	20263	6	7	D286	20263	6	55
D123-5B	20263	6	9	D287	20263	6	53
D223-53	20263	6	40	D293	20263	2	10
D123-6	20263	6	4	D296	20263	1	18
	20263	6	8	D303	20263	2	8
D123-7	20263	6	13		20263	2	14
D125	20263	3	2	D323-9B	20263	6	11
	20263	5	2	D323R	20263	6	1
D132	20263	3	3	D3501	20263	2	13
	20263	5	3	D3502	20263	2	7
D136-9	20263	4	16	D3504	20263	2	15
D140	20263	4	18	D3506	20263	2	12
D142A	20263	1	17	D3508A	20263	2	5
D171-1A	20263	1	26	D3516-1	20263	7	15
D171-2A	20263	1	24	D3516-18	20263	7	12
D171-3A	20263	1	22	D3516-5	20263	11	2
D171-4A	20263	1	21	D3527	20263	6	44
D171-5A	20263	1	23	D353A	20263	1	16
D175	20263	11	6	D3535	20263	4	6
D176	75535	11	5	D3538	20263	4	7
D180	20263	4	2	D3538-1	20263	4	19
	20263	6	46	D3538-11	20263	1	1
D181	20263	4	3	D3538-2	20263	4	9
	20263	6	47	D3538-3	20263	4	12
D182	20263	4	4	D3538-4	20263	4	13
	20263	6	48	D3538-5	20263	4	11
D209	20263	2	1	D3538-6	20263	4	8
D210A	20263	2	6	D3538-7	20263	4	14
D215	20263	6	50	D3543	20263	1	4
D216-10	20263	7	8	D3544	20263	1	5
D216-11	20263	7	5	D3547	20263	1	13
D216-12	20263	7	3	D3551	20263	1	15
D216-2	20263	7	13	D3559	20263	1	7
	20263	8	8	D3560	20263	1	8
D216-4	20263	7	14	D3561	20263	1	6
	20263	8	8	D3566A	20263	10	1
D216-6	20263	7	9	D3566A2	20263	10	2
D216-7A	20263	7	10	D3566A3	20263	10	5
D216-8	20263	7	7	D3568	76689	1	2
D216-9	20263	7	6	D3569	76689	1	3
D217A	20263	7	16	D3573	20263	8	1
D220	20263	1	10	D3573-1	20263	8	6
D221	20263	2	4	F9474	20263	11	2
D223-45	20263	6	41	LC042E13	20263	9	18
D223-46	20263	6	34	MIL27267	81349	4	1
D223-48	20263	6	31		81349	6	45

**Section VII. INDEX-FEDERAL STOCK NUMBER AND REFERENCE NUMBER
CROSS-REFERENCE TO FIGURE AND ITEM NUMBER**

<u>Reference No.</u>	<u>Mfg Code</u>	<u>Fig. No.</u>	<u>Item No.</u>	<u>Reference No.</u>	<u>Mfg Code</u>	<u>Fig. No.</u>	<u>Item No.</u>
MS35338-4	96906	9	25				
NS12H	83616	6	54				
S5-58	75535	1	9				
S605-4	02570	6	51				
TR605	81349	8	2				
1S	92555	4	17				
2-20	45681	6	39				
2HIG11	73992	10	8				
2K1G20	73992	10	9				
20A022	20263	9	22				
20A023	20263	9	23				
20A179	20263	9	31				
20A288	20263	9	34				
20A305	20263	9	32				
20A306	20263	9	37				
20B026	20263	9	21				
20B065	20263	9	36				
20B127	20263	9	29				
20D046	20263	9	38				
2080-2-2	20263	9	1				
2081-4-2	20263	9	1				
2083-4-4	20263	9	20				
2084-2-3-4	20263	9	12				
2 INTE040	72962	6	28				
22-249	20263	6	49				
32-221	20263	11	7				
32-620	20263	1	19				
3300X4X2	79470	10	196				
42-462	20263	7	1				
42NE058	72962	6	23				
5000-56	79136	3	4				
	79136	5	4				
5100-4	99879	9	3				
5100S7	20263	9	40				
5100S9	20263	9	39				
52NE064	72962	4	5				
	72962	6	42				
6TVS	45681	6	52				
600-001-1-2	83259	10	4				
62-095	20263	11	4				
705	20265	9	13				
85-0050-4	45681	6	33				
8810	53477	10	3				

**Section VII. INDEX-FEDERAL STOCK NUMBER AND REFERENCE NUMBER
CROSS-REFERENCE TO FIGURE AND ITEM NUMBER**

<u>STOCK NUMBER</u>	<u>FIGURE NO.</u>	<u>ITEM NO.</u>	<u>STOCK NUMBER</u>	<u>FIGURE NO.</u>	<u>ITEM NO.</u>
3120-490-1871	2	12	3895-989-3410	7	13
3895-071-8052	3	3		8	8
	5	3	3895-989-3411	7	9
3895-247-3152	9	1	3895-989-3418	11	1
3895-247-3177	6	1	4710-901-9645	6	54
3895-247-3179	4	7	4720-236-2655	9	2
3895-248-4342	4	12	4720-236-2656	9	4
3895-248-4343	7	10		10	7
3895-248-4344	6	9	4720-857-1736	4	1
3895-248-4616	2	8		6	45
	2	14	4730-249-4262	9	3
3895-401-4134	2	1	4730-871-8376	4	4
3895-401-4135	2	7		6	48
3895-401-4136	2	13	4820-248-3700	9	17
3895-401-4141	6	11	4930-900-2356	4	15
3895-401-4143	6	55	5310-489-6301	2	5
3895-401-4144	8	6	5330-187-3638	7	2
3895-401-4145	8	5	5330-198-6183	6	15
3895-401-4146	10	1	5330-297-6868	6	32
3895-401-4139	1	11		6	37
3895-401-4281	4	9	5330-439-2530	1	5
3895-868-7931	6	3	5330-490-6475	6	33
3895-868-7932	6	21	5330-498-4542	9	23
3895-871-8383	3	6	5330-601-4432	10	4
	5	6	5330-618-2517	9	33
3895-871-8384	1	20	5330-850-6652	6	39
3895-871-8385	3	1	5330-920-7293	2	2
	5	1	5340-498-4594	9	40
3895-900-2353	3	5	5340-498-4605	7	16
			5340-618-0245	9	39
3895-900-8602	7	4	5340-868-7930	2	9
3895-900-8603	1	25	5360-477-4921	4	13
3895-902-4118	6	35	5360-477-4922	6	12
3895-936-7143	1	22	6685-075-4694	9	14
3895-989-3408	2	6			

By Order of the Secretary of the Army:

Official:

KENNETH G. WICKHAM,
Major General, United States Army,
The Adjutant General.

W. C. WESTMORELAND,
General, United States Army,
Chief of Staff.

Distribution:

To be distributed in accordance with DA Form 12-25, Section II, (qty rqr block #418) organizational maintenance requirements for Hammers, Pile Driving.

☆ U.S. GOVERNMENT PRINTING OFFICE: 1970-431101/443

RECOMMENDED CHANGES TO EQUIPMENT TECHNICAL PUBLICATIONS



THEN... JOT DOWN THE DOPE ABOUT IT ON THIS FORM, CAREFULLY TEAR IT OUT, FOLD IT AND DROP IT IN THE MAIL!

SOMETHING WRONG WITH THIS PUBLICATION?

FROM: (PRINT YOUR UNIT'S COMPLETE ADDRESS)

DATE SENT

PUBLICATION NUMBER

PUBLICATION DATE

PUBLICATION TITLE

BE EXACT... PIN-POINT WHERE IT IS

PAGE NO.

PARA-GRAPH

FIGURE NO.

TABLE NO.

IN THIS SPACE TELL WHAT IS WRONG AND WHAT SHOULD BE DONE ABOUT IT:

TEAR ALONG PERFORATED LINE

PRINTED NAME, GRADE OR TITLE, AND TELEPHONE NUMBER

SIGN HERE:

DA FORM 2028-2
1 JUL 79

PREVIOUS EDITIONS ARE OBSOLETE.

P.S.—IF YOUR OUTFIT WANTS TO KNOW ABOUT YOUR RECOMMENDATION MAKE A CARBON COPY OF THIS AND GIVE IT TO YOUR HEADQUARTERS.

THE METRIC SYSTEM AND EQUIVALENTS

WEIGHT MEASURE

1 Centimeter = 10 Millimeters = 0.01 Meters = 0.3937 Inches
 1 Meter = 100 Centimeters = 1000 Millimeters = 39.37 Inches
 1 Kilometer = 1000 Meters = 0.621 Miles

WEIGHTS

1 Gram = 0.001 Kilograms = 1000 Milligrams = 0.035 Ounces
 1 Kilogram = 1000 Grams = 2.2 lb.
 1 Metric Ton = 1000 Kilograms = 1 Megagram = 1.1 Short Tons

LIQUID MEASURE

1 Milliliter = 0.001 Liters = 0.0338 Fluid Ounces
 1 Liter = 1000 Milliliters = 33.82 Fluid Ounces

SQUARE MEASURE

1 Sq. Centimeter = 100 Sq. Millimeters = 0.155 Sq. Inches
 1 Sq. Meter = 10,000 Sq. Centimeters = 10.76 Sq. Feet
 1 Sq. Kilometer = 1,000,000 Sq. Meters = 0.386 Sq. Miles

CUBIC MEASURE

1 Cu. Centimeter = 1000 Cu. Millimeters = 0.06 Cu. Inches
 1 Cu. Meter = 1,000,000 Cu. Centimeters = 35.31 Cu. Feet

TEMPERATURE

$5/9(^{\circ}\text{F} - 32) = ^{\circ}\text{C}$
 212° Fahrenheit is equivalent to 100° Celsius
 90° Fahrenheit is equivalent to 32.2° Celsius
 32° Fahrenheit is equivalent to 0° Celsius
 $9/5^{\circ}\text{C} + 32 = ^{\circ}\text{F}$

APPROXIMATE CONVERSION FACTORS

TO CHANGE	TO	MULTIPLY BY
Inches	Centimeters	2.540
Feet	Meters	0.305
Yards	Meters	0.914
Miles	Kilometers	1.609
Square Inches	Square Centimeters	6.451
Square Feet	Square Meters	0.093
Square Yards	Square Meters	0.836
Square Miles	Square Kilometers	2.590
Acres	Square Hectometers	0.405
Cubic Feet	Cubic Meters	0.028
Cubic Yards	Cubic Meters	0.765
Fluid Ounces	Milliliters	29.573
its	Liters	0.473
arts	Liters	0.946
allons	Liters	3.785
Ounces	Grams	28.349
Pounds	Kilograms	0.454
Short Tons	Metric Tons	0.907
Pound-Feet	Newton-Meters	1.356
Pounds per Square Inch	Kilopascals	6.895
Miles per Gallon	Kilometers per Liter	0.425
Miles per Hour	Kilometers per Hour	1.609

TO CHANGE	TO	MULTIPLY BY
Centimeters	Inches	0.394
Meters	Feet	3.280
Meters	Yards	1.094
Kilometers	Miles	0.621
Square Centimeters	Square Inches	0.155
Square Meters	Square Feet	10.764
Square Meters	Square Yards	1.196
Square Kilometers	Square Miles	0.386
Square Hectometers	Acres	2.471
Cubic Meters	Cubic Feet	35.315
Cubic Meters	Cubic Yards	1.308
Milliliters	Fluid Ounces	0.034
Liters	Pints	2.113
Liters	Quarts	1.057
ers	Gallons	0.264
ms	Ounces	0.035
ograms	Pounds	2.205
Metric Tons	Short Tons	1.102
Newton-Meters	Pounds-Feet	0.738
Kilopascals	Pounds per Square Inch	0.145
ometers per Liter	Miles per Gallon	2.354
ometers per Hour	Miles per Hour	0.621



PIN: 005614-000

PIN : 005614-000